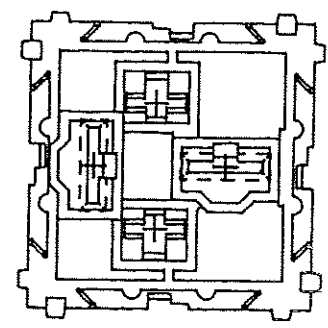
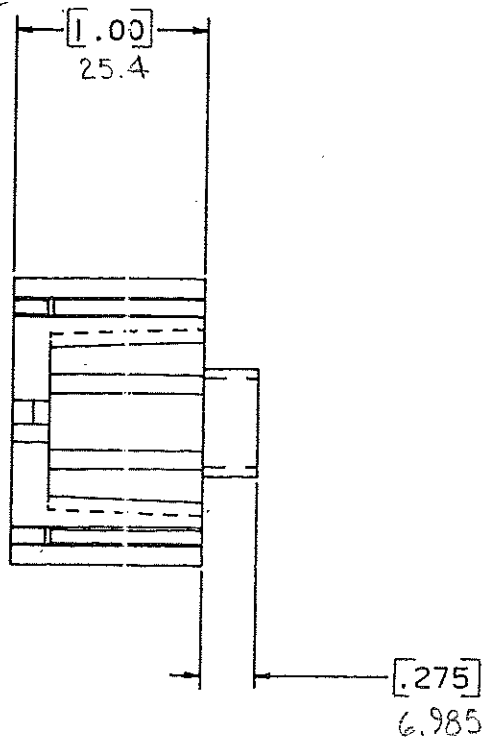
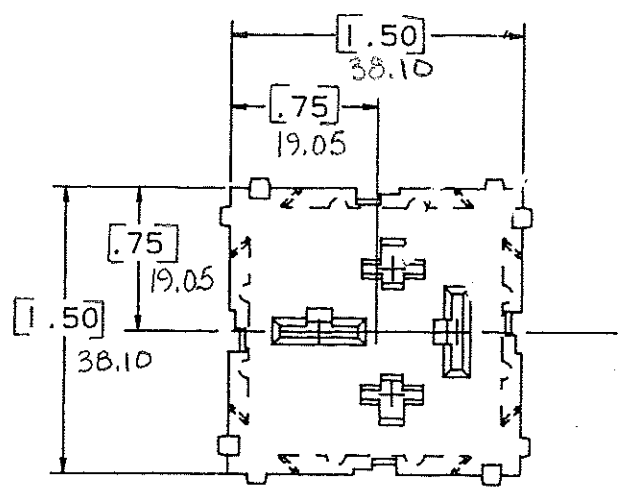


DRAWING NO.

NOTE: ALL DIMENSIONS ARE IN MILLIMETERS.  
ENGLISH DIMENSIONS IN [ ]



CERTIFICATION OF  
COUNTRY OF ORIGIN  
REQUIRED

COPIES TO	18	MAT'L SPEC.	Nylon Case: Black	
	19	FINISH	SCALE	
	20	DR. <i>GES.</i> <i>Apr. 7 94</i>	CHK <i>GES.</i>	SUPER. DR.
	21	APPD. <i>H. Harley</i>	DATE <i>10-11-94</i>	RAW STK. WT. LBS./M
22	2	TOLERANCE UNLESS OTHERWISE SPECIFIED		
23	3	TWO PLACE DEC. $\pm .50 \text{ mm}$ [0.02]		
24	4	THREE PLACE DEC. $\pm .25 \text{ mm}$ [0.010]		
25	5	ANGULAR $\pm$		
26	6	TITLE		
27	7	1 POSITION TONER RELAY MODULE		
28	8	Littelfuse		
29	9	800 E. NORTHWEST HIGHWAY		
30	10	DES PLAINES, ILLINOIS 60016		
31	11	DRAWG. NO. E-03540535Z		
32	12			
33	13			
34	14			
35	15			
36	16			
37	17			
38	18			
39	19			
40	20			
41	21			
42	22			
43	23			
44	24			
45	25			
46	26			
47	27			
48	28			
49	29			
50	30			
51	31			
52	32			
53	33			
54	34			
55	35			
56	36			
57	37			
58	38			
59	39			
60	40			
61	41			
62	42			
63	43			
64	44			
65	45			
66	46			
67	47			
68	48			
69	49			
70	50			

LTR	REVISION	CHK.	APD.
A	06534 - RELEASED OCTOBER 10, 94 <i>GES.</i>	<i>GES.</i>	<i>AL</i>
B	36986L - ADD METRIC DIM. 7-19-95 <i>RFR</i>	<i>GES.</i>	<i>GES.</i>
C	37055D - CHANGE TITLE 8-19-95 <i>J.U.</i>	<i>TRP</i>	<i>GES.</i>
D	37150D - CHANGE TITLE 11/13/95 <i>GES.</i>	<i>GES.</i>	<i>GES.</i>
E	000807ER - RE-INSTATE 10/09/09 <i>J.U.</i>		