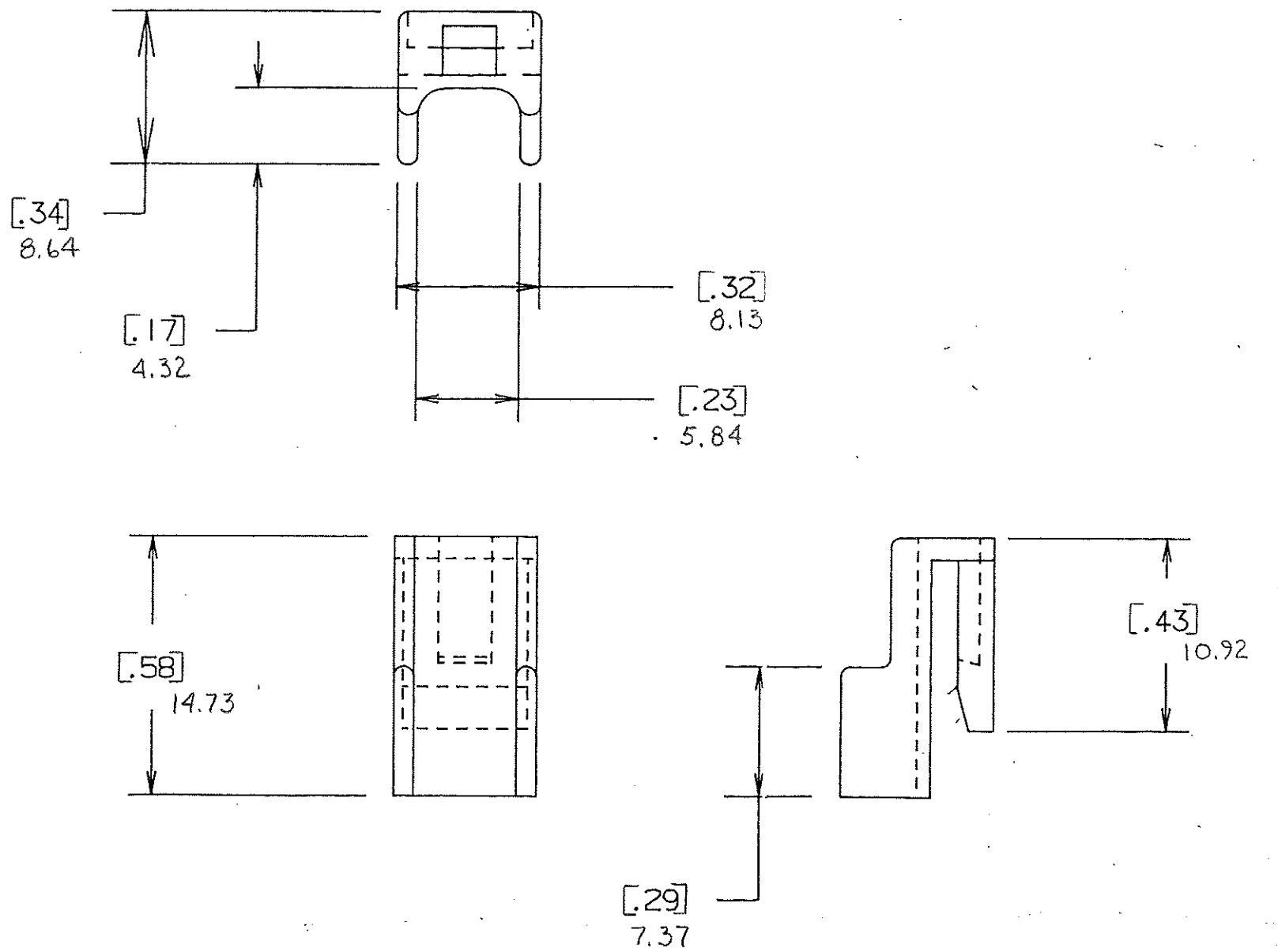


DRAWING NO.



NOTE: ALL DIMENSION ARE IN MILLIMETERS, ENGLISH DIMENSIONS IN []

CERTIFICATION OF COUNTRY OF ORIGIN REQUIRED

COPIES TO		MAT'L. SPEC.		FINISH		SCALE	
1	2	3	4	5	6	7	8
9	10	11	12	13	14	15	16
17	18	19	20	21	22	23	24
DR. <i>GES.</i> <i>Apr. 7, 94</i>		CHK. <i>LS</i>		SUPER. DR.		RAW STK. WT. LBS./M	
APPD. <i>A. Hurley</i>		DATE <i>10-11-94</i>		TOLERANCE UNLESS OTHERWISE SPECIFIED		TWO PLACE DEC. ± .50mm [<i>.020</i>] FRACTION ± THREE PLACE DEC. ± .25mm [<i>.010</i>] ANGULAR ±	
TITLE <i>TERMINAL LOCKS</i>							
LITTELFUSE 800 E. NORTHWEST HIGHWAY DES PLAINES, ILLINOIS 60016				DRWG. NO. <i>E-03540528Z</i>			

LTR	REVISION	CHK.	APD.
A	06534 - RELEASED OCTOBER 10, 94 <i>GES.</i>	<i>LS</i>	<i>AA</i>
B	36988C - ADD METRIC DIM'S 7-19-95 <i>RFR</i>	<i>LS</i>	<i>LS</i>
C	37085D - CHANGE TITLE 8-19-95 <i>JUH</i>	<i>LS</i>	<i>LS</i>
D	37150D - CHANGE TITLE 11/2/95 <i>GES</i>	<i>LS</i>	<i>LS</i>
E	000807ER - RE-INSTATE 10/09/09 <i>J.U.</i>		