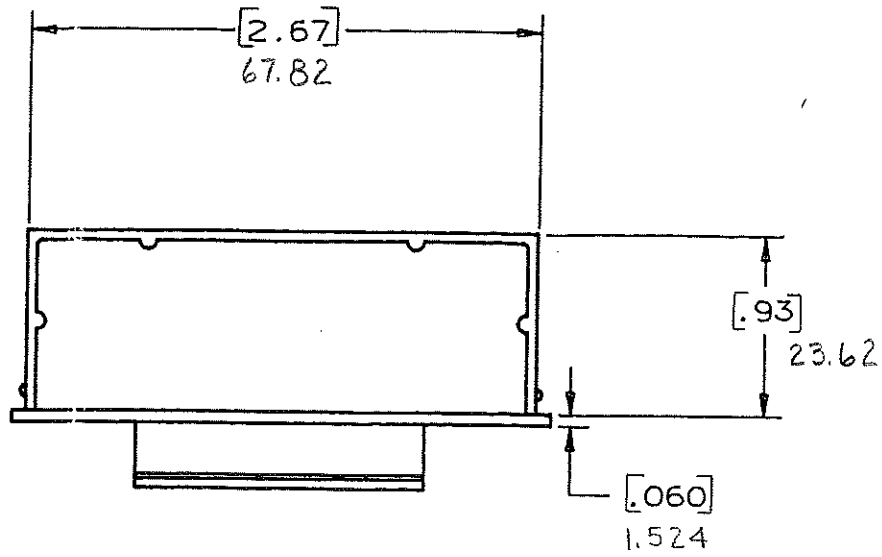
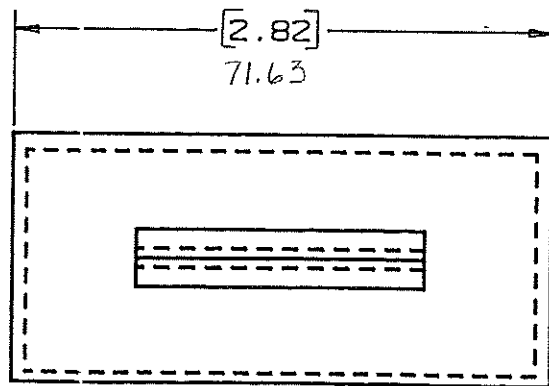
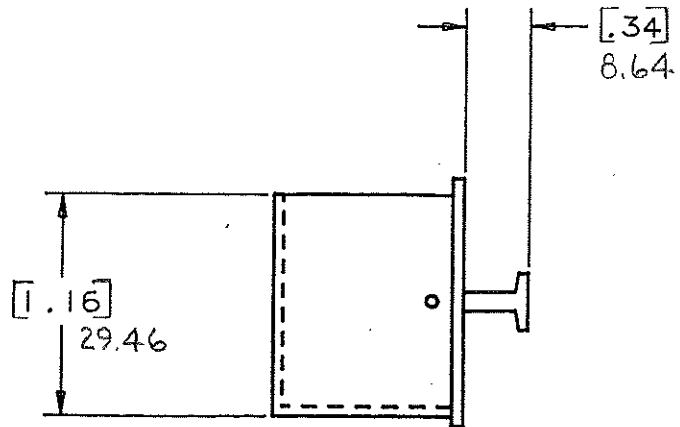


DRAWING NO.



CERTIFICATION OF
COUNTRY OF ORIGIN
REQUIRED

COPIES TO	18	MAT'L. SPEC.	NYLON COLOR: BLACK	
	19		FINISH	SCALE
9	20	DR.	GES. Oct. 7, 94	CHK. <i>ges.</i>
10	21	APPD.	<i>A. Husley</i>	DATE
11	22	TOLERANCE UNLESS OTHERWISE SPECIFIED		
12	23	TWO PLACE DEC. ± .50mm [0.020] FRACTION ±		
13	24	THREE PLACE DEC. ± .25mm [0.010] ANGULAR ±		
14	25	TITLE		
15	26	STORAGE DRAWER INSERT		
16	27	Littelfuse		
17	28	800 E. NORTHWEST HIGHWAY		
18	29	DES PLAINES, ILLINOIS 60016		
19	30	DRWG. NO		
20	31	D- 03540522Z		

LTR	REVISION	CHK.	APD.
A	06534 - RELEASED October 10, 94 <i>ges.</i>	<i>ges.</i>	<i>AM</i>
B	36988C - ADD METRIC DIM 7-19-95 <i>RFR</i>	<i>ges.</i>	<i>ges.</i>
C	37033D - CHANGE TITLE 8-19-95 <i>JCU</i>	<i>RFR</i>	<i>ges.</i>
D	000807ER - RE-INSTATE 10/09/09 <i>J.U.</i>		

NOTE:

ALL DIMENSIONS ARE IN MILLIMETERS,
ENGLISH DIMENSIONS IN [].

Handwritten notes:
1.16
29.46
0.34
8.64