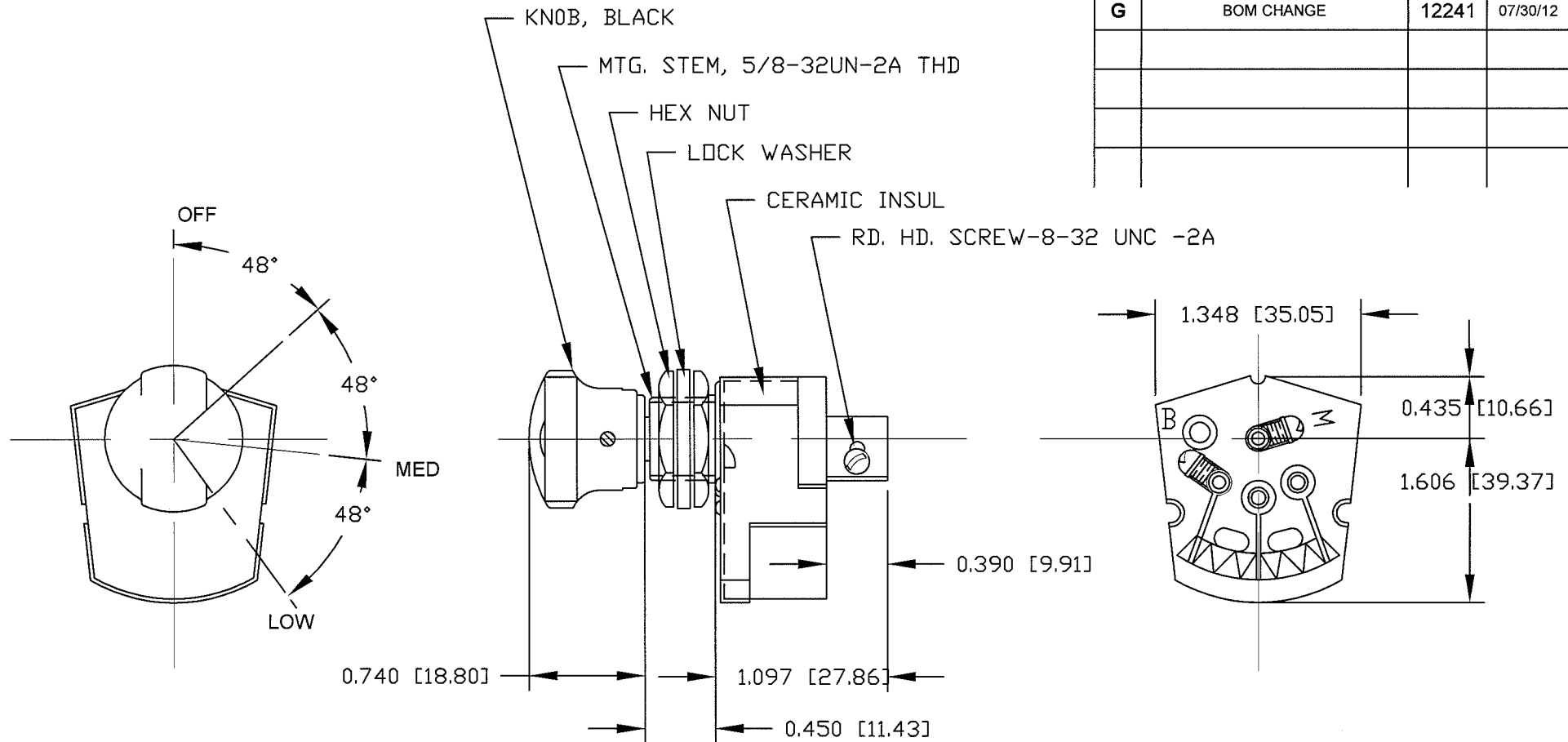


Revision Control Record

| Rev. | Description of Change | ECN No. | Date |
|------|-----------------------|---------|----------|
| G | BOM CHANGE | 12241 | 07/30/12 |
| | | | |
| | | | |
| | | | |



NOTE: ALL STEEL PARTS PLATED

12 VOLT - 3 OHMS

DO NOT SCALE

Note: unless noted otherwise all dimension are AFTER plating
Tolerances: Unless otherwise specifically noted, the following
are default tolerances;

| | | |
|---------------------|-----------------------|----------------|
| 2-places | 3-places | Angular |
| ± 0.02 [0.5] | ± 0.005 [0.13] | ± 1° |

Unless otherwise specified dimensions are in inches.
Dimensions in brackets [] are in millimeters.

"REF" = Non-Toleranced Reference Dimension, shown for
clarification purposes only.

Note: All tolerances are Non-Cumulative.

PROPRIETARY INFORMATION

All information contained
herein, is proprietary to the
Cole Hersee Company.
Unauthorized use or
reproduction is prohibited.

3RD ANGLE
PROJECTION

Special Characteristics:

- ☒ **CC** Critical Characteristic, relating to
Safety and/or Regulatory Compliance
- ☒ **X** Significant Characteristic relating to
Process Control
- ☒ **KC** Control Dimension relating to Form -
Fit - Function as defined by Cole
Hersee Company and/or the Customer



Littelfuse®

Phn: 617-268-2100 Web: www.colehersee.com

Description:

HEATER SWITCH

Drawing /
Part No.:

68362

Current Rev.

G