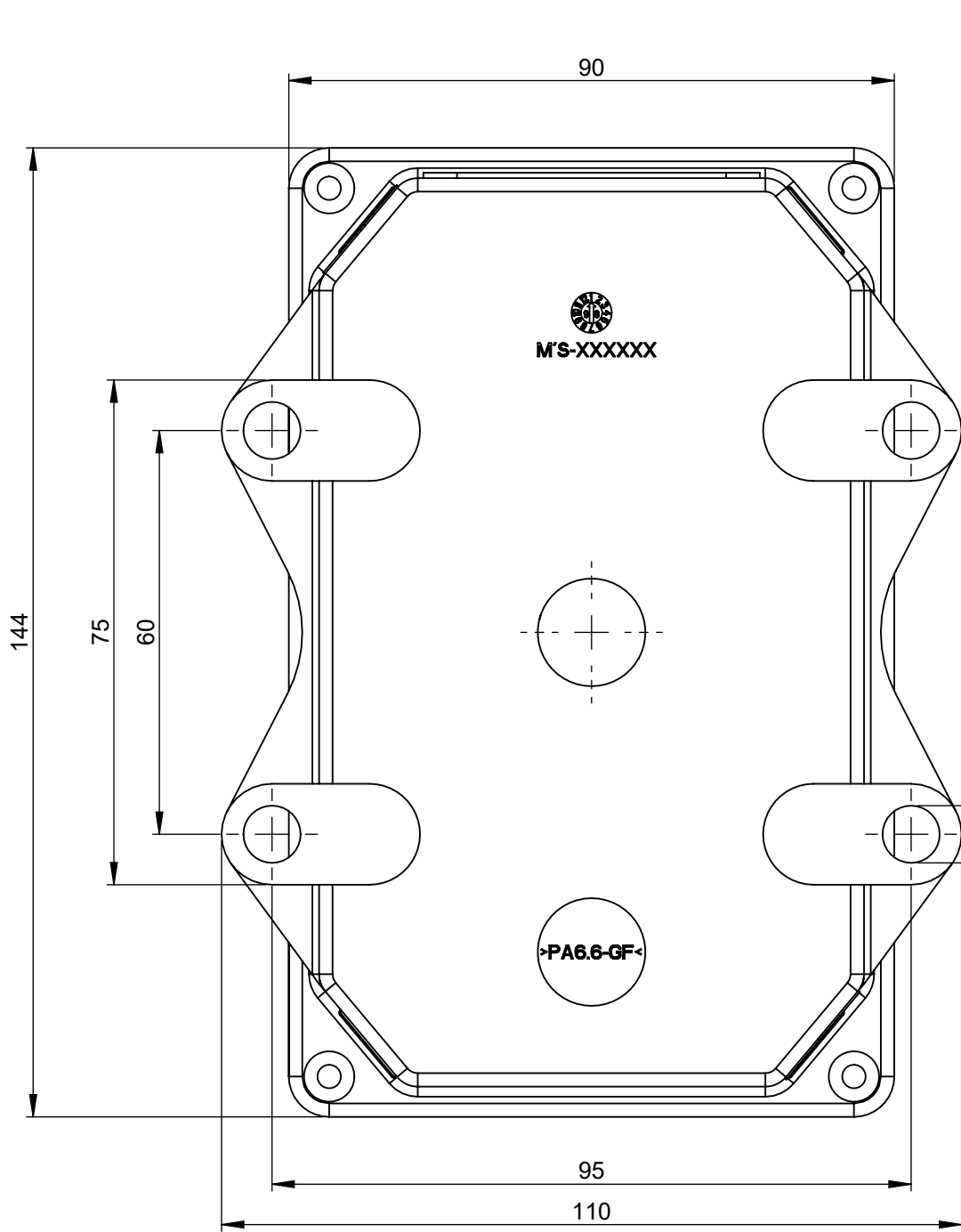
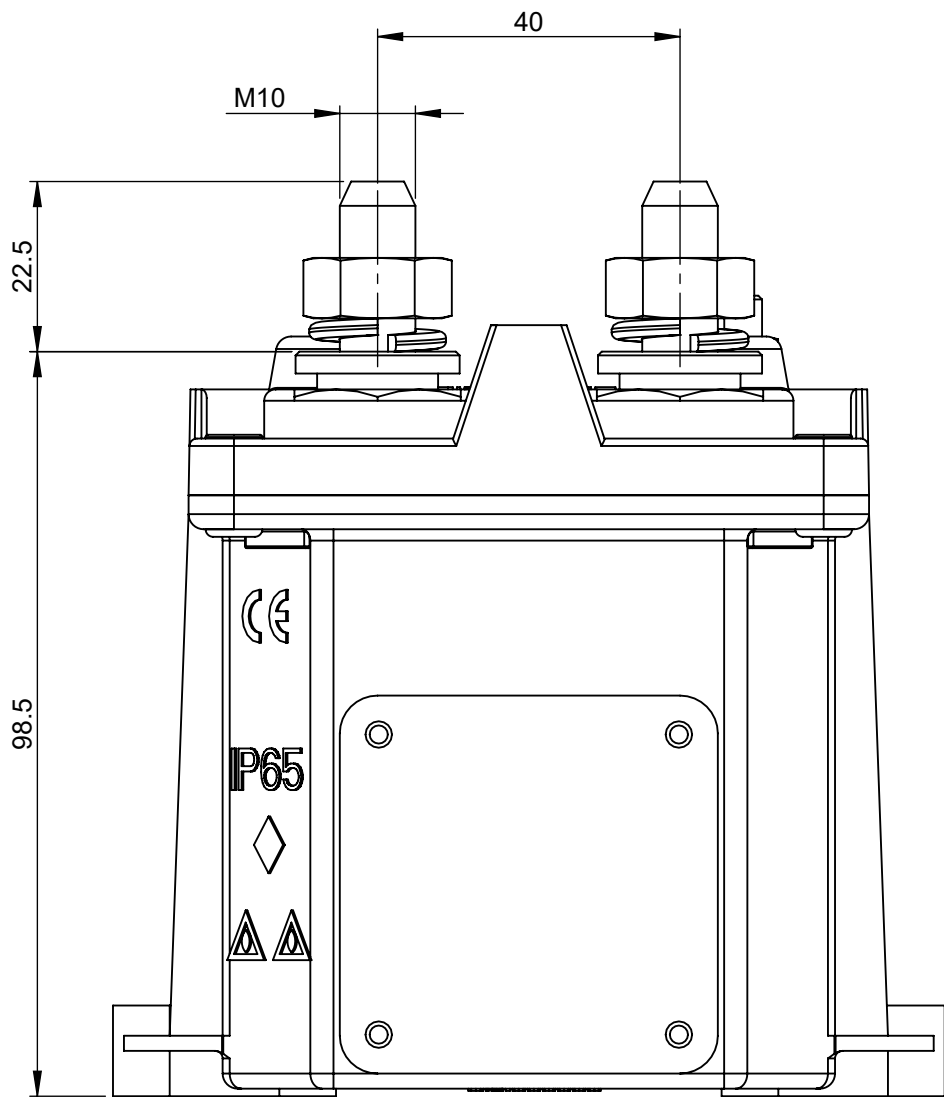
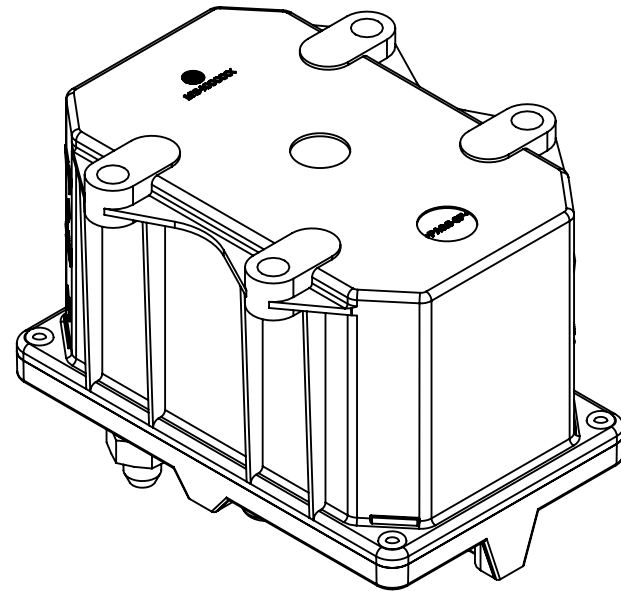
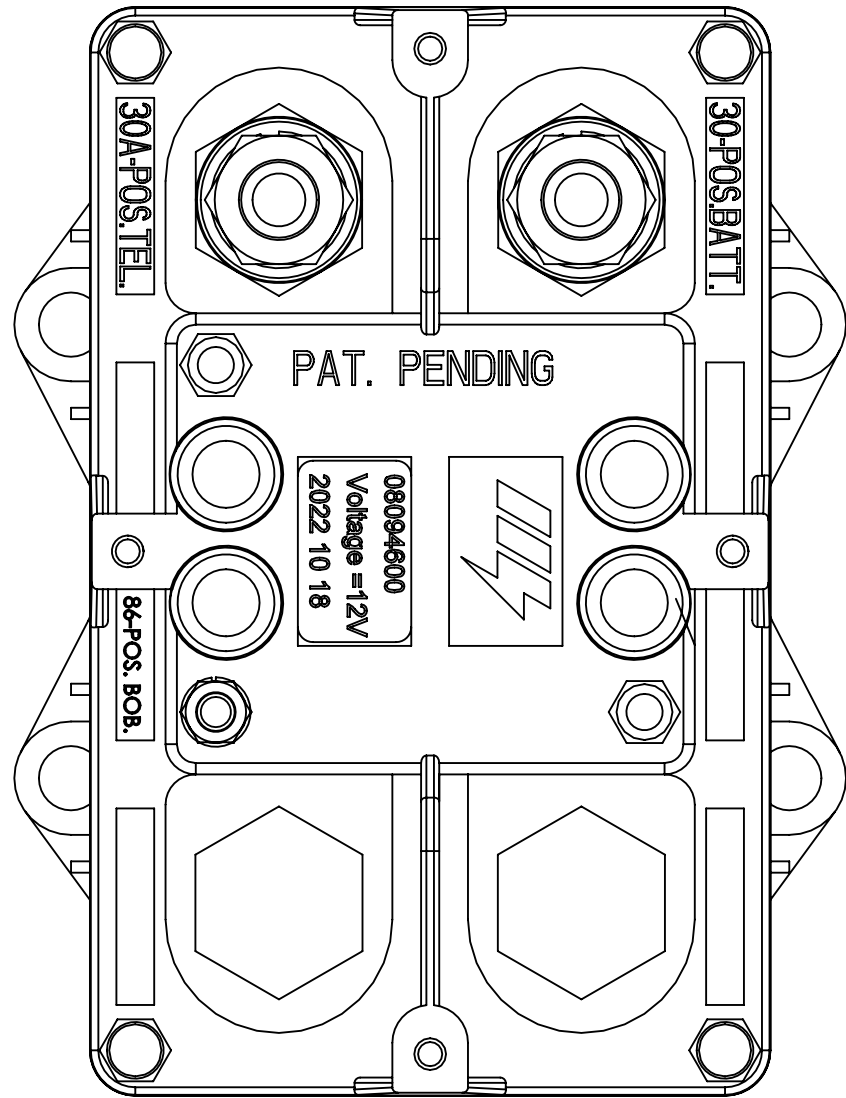
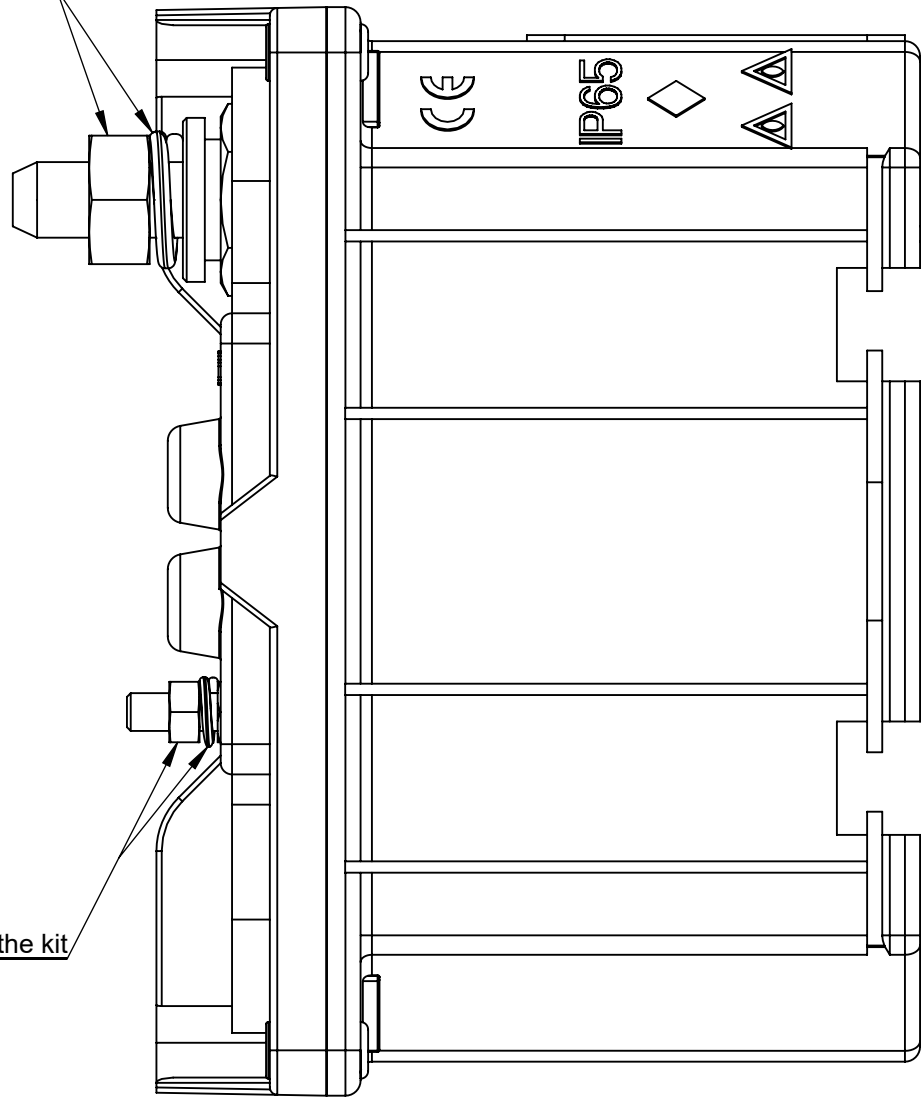


REV.		DESCRIPTION	REVISIONS			
			DATE	GCF / ECR	DESIGNED	APPROVED
A		Initial Release	18-Oct-22		L.Dal Molin	M.Tinto

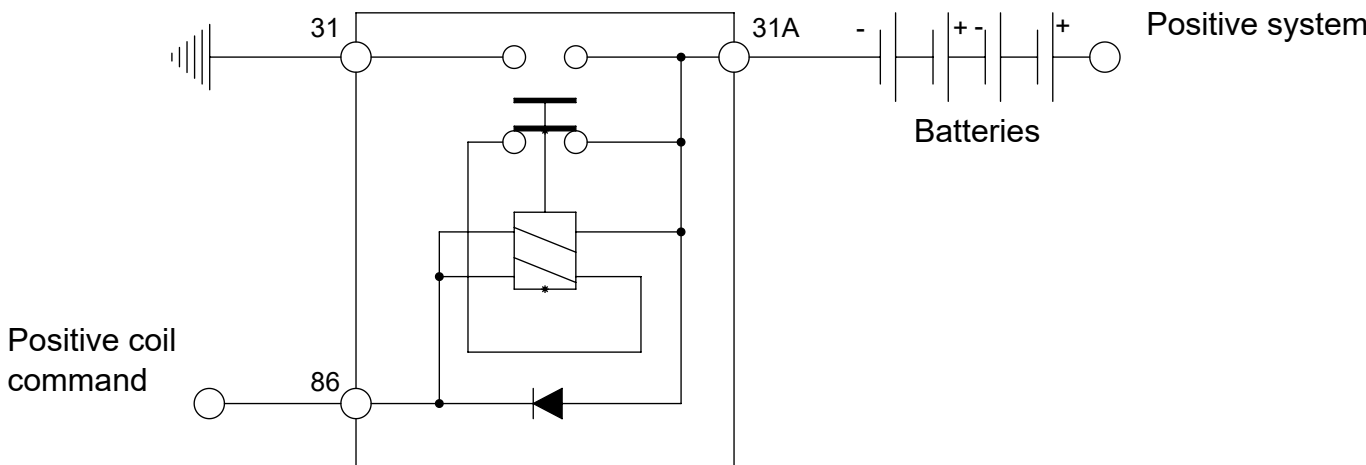


Supplied in the kit

Supplied in the kit




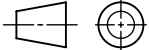


Electrical Diagram



CHARACTERISTICS

- Nominal tension: 12V
- Maximum continuos current: 250A
- Maximum current: 2000A for 30 sec.
- Number of mechanical and electrical cycles: 100.000
- Tightening torque M10 nuts: 20 Nm max
- Tightening torque M5 nuts: 1.6±0.4 Nm
- Fix the device to the structure by the M8 screws and plane washer with a torque of 10±2 Nm.

DIMENSIONS AND TOLERANCES IN MILLIMETERS, DEFINED ACCORDING TO ISO 1101-2017.						
linear dimensions						
0,5	>3	>6	>30	>120	>400	>1000
3	6	30	120	400	1000	2000
±0,2	±0,3	±0,5	±0,8	±1,2	±2	±3
angle (for range of lengths)						
up to 10	>10	>50	>120	>400	>1000	>2000
±1°30'	±1°	±0°30'	±0°15'	±0°15'	±0°15'	±0°15'
	FIT/ FUNCTION CRITICAL CHARACTERISTICS SYMBOL					
<S>	SAFETY/ COMPLIANCE CRITICAL CHARACTERISTICS SYMBOL					
CPK	DENOTES CPK DIMENSIONS MINIMUM CPK VALUE					
	DENOTES A CHARACTERISTIC THAT PROVIDES AN INDICATION OF PROCESS PERFORMANCE.PROCEDURE FOR MEASUREMENTAND TRACKINGTO BE DEFINED IN LITTELFUSE INSPECTION INSTRUCTIONS					
CP	DENOTES CP DIMENSIONS. -MINIMUM CP VALUE MUST BE WITHIN THE DIMENSIONAL LIMITATIONS SHOWN ON DRAWING AND INITIALLY LOCATED TO ALLOW FOR MAXIMUM TOOL LIFE					
		NAME	DATE	 Littelfuse® Expertise Applied Answers Delivered		
DRAWN		L. Dal Molin	1 Sep 2022			
CHECKED		-	-			
		-	-			
FORM NO: CVP-PE40-0013 REV A				TITLE		
FIRST ANGLE PROJECTION				ELECTRICAL BMS TGC 12V(-)		
		SIZE:	DWG. NO.	REV.		
		A2	OL-08094600	A		
DO NOT SCALE DRAWING		SCALE 1:1			SHEET 1 OF 1	