

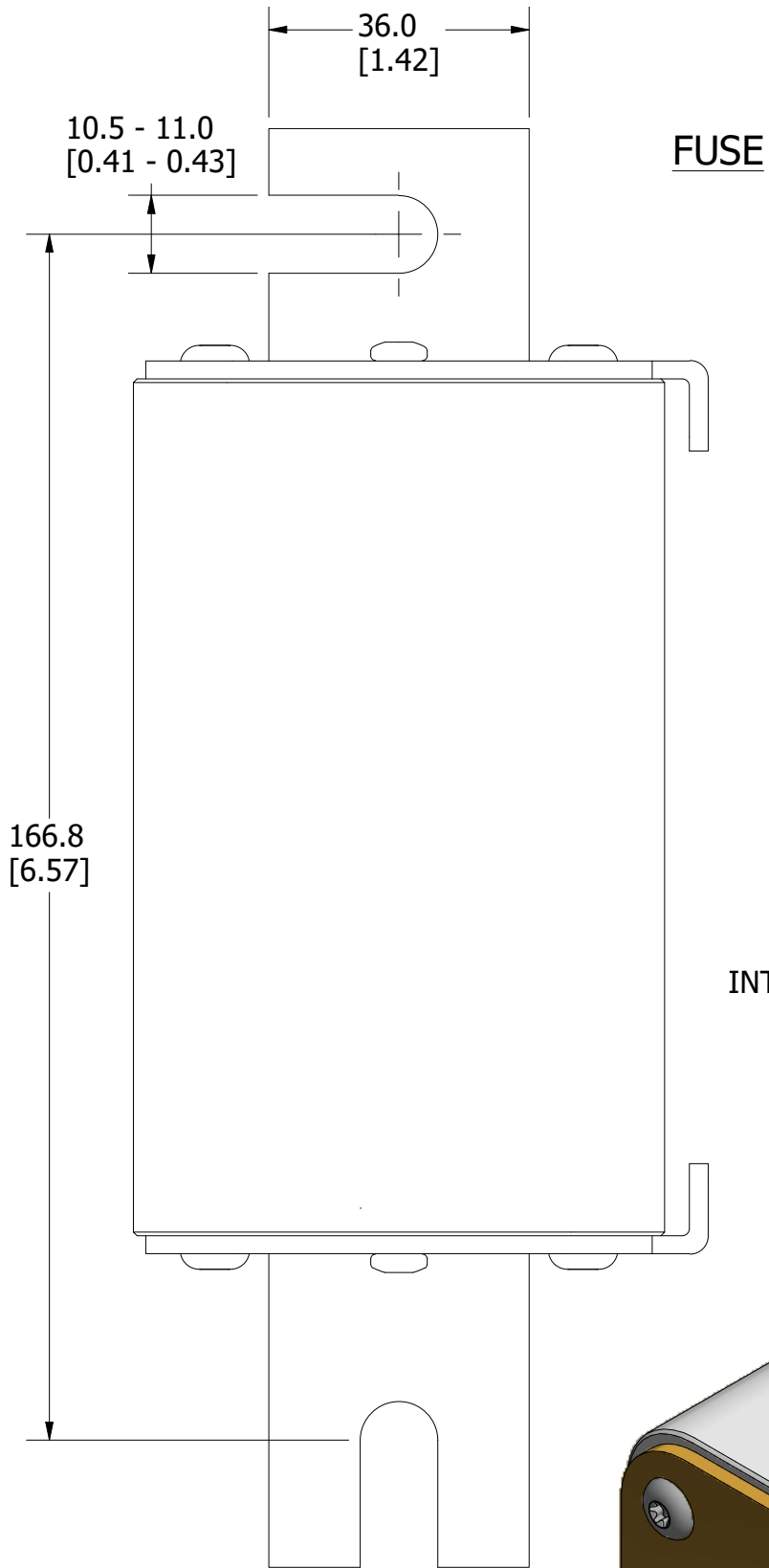
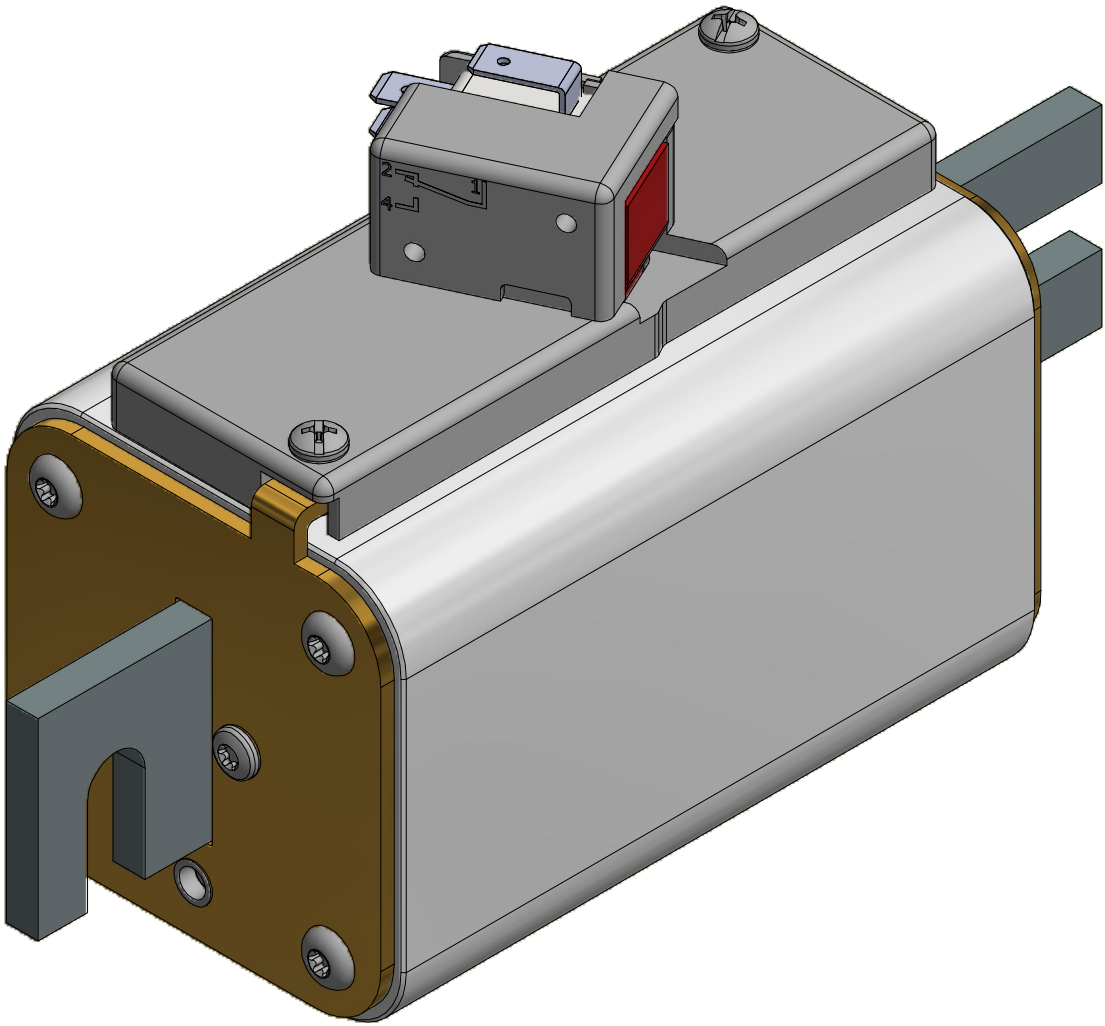
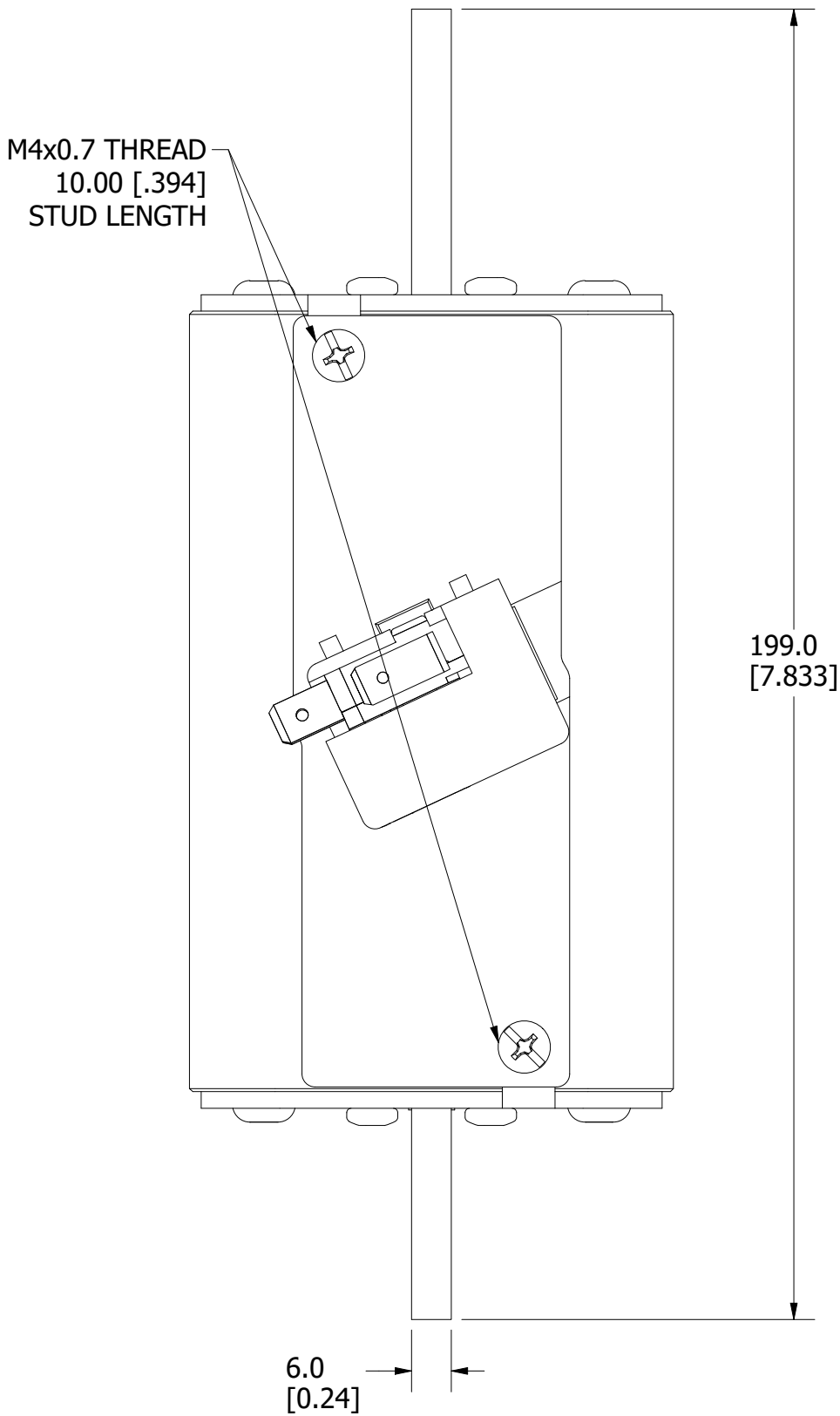
MOUNTING SPECS:

RECOMMENDED FASTENER: M10 OR 3/8"

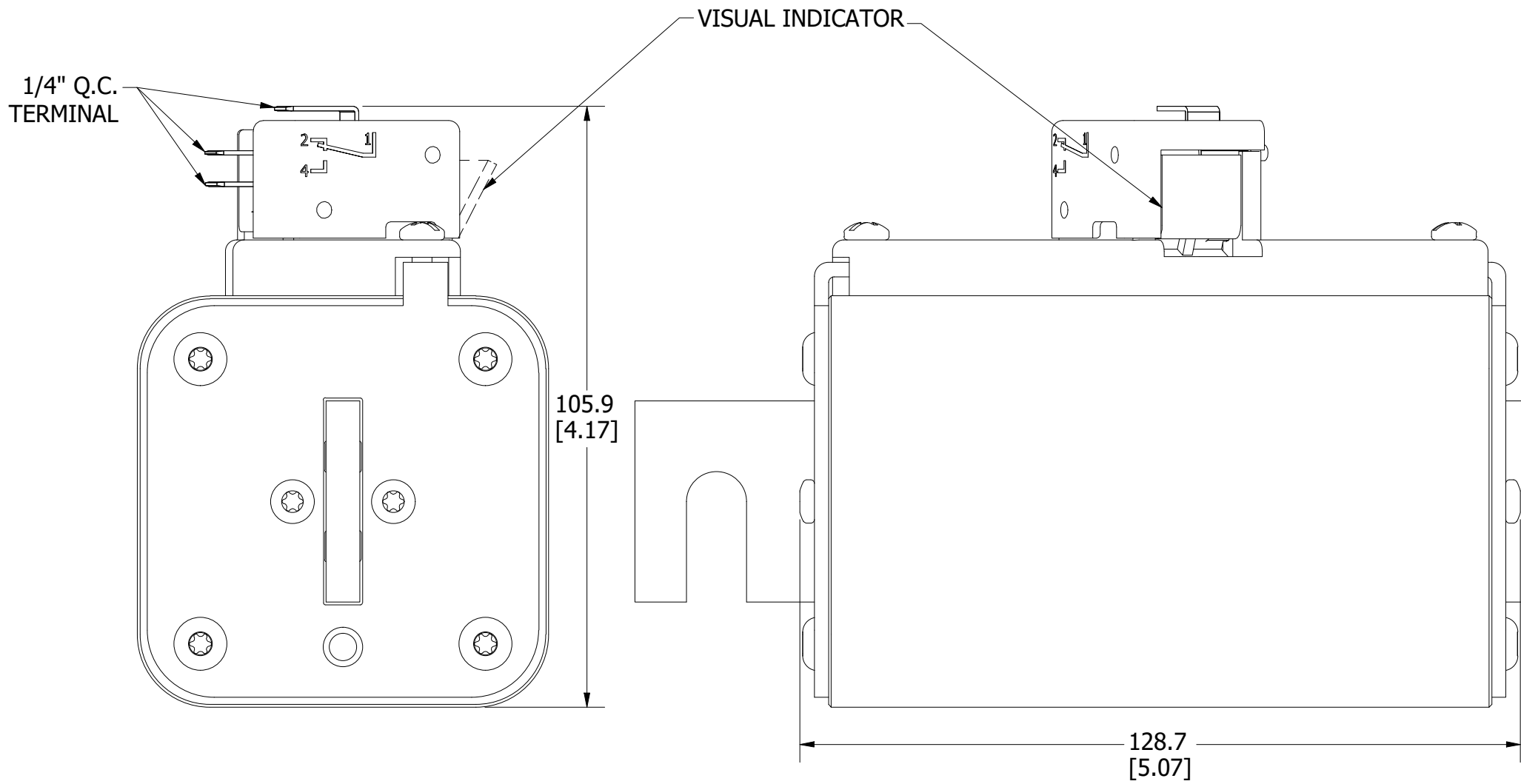
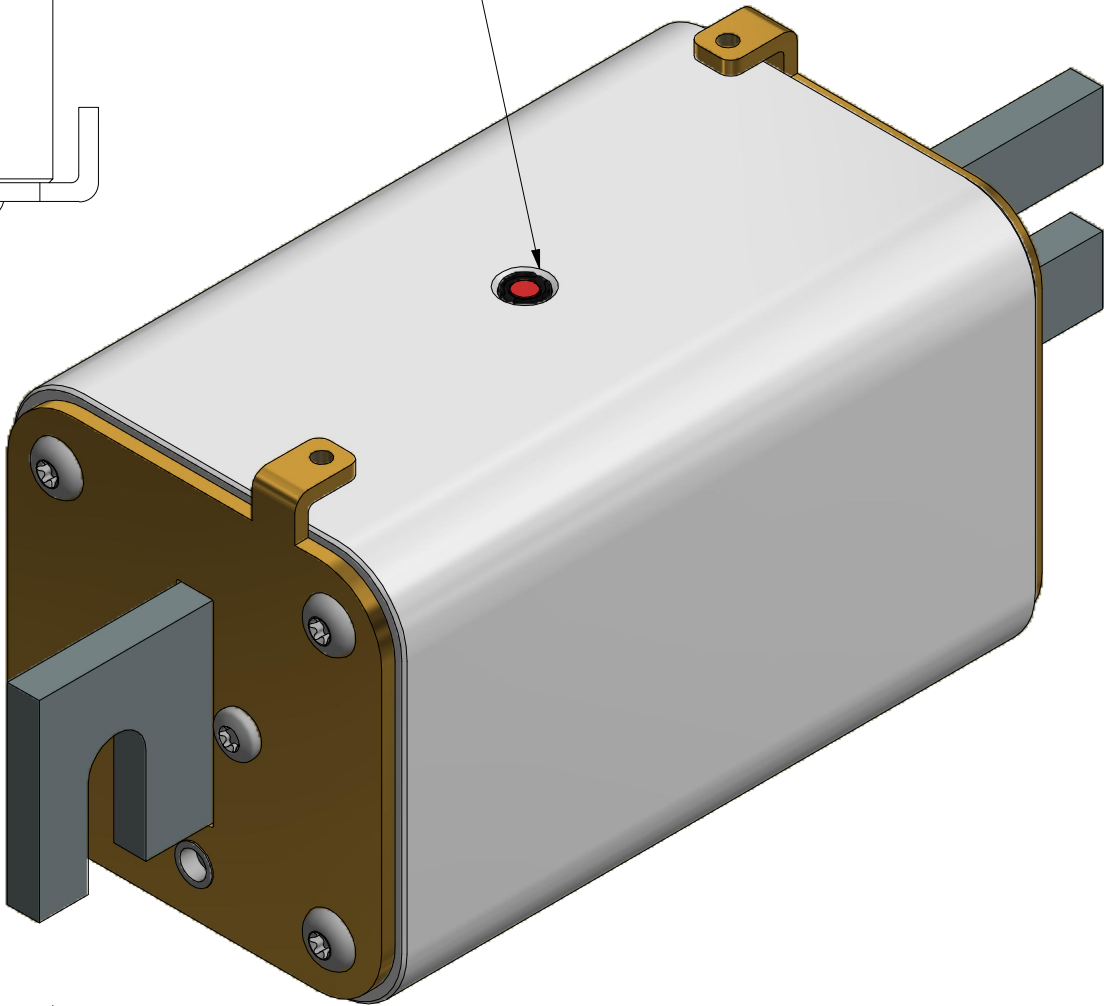
TIGHTENING TORQUE (REFERENCE ONLY): 26Nm

REVISION		
REV	DATE	DESCRIPTION
A	3/13/20	522085GCP - RELEASE MRY
B	3/23/20	522118ECP/D - UPDATE LENGTH MRY
C	10/25/23	526838ECP/D - ADD VIEW W/O MICROSWITCH MRY

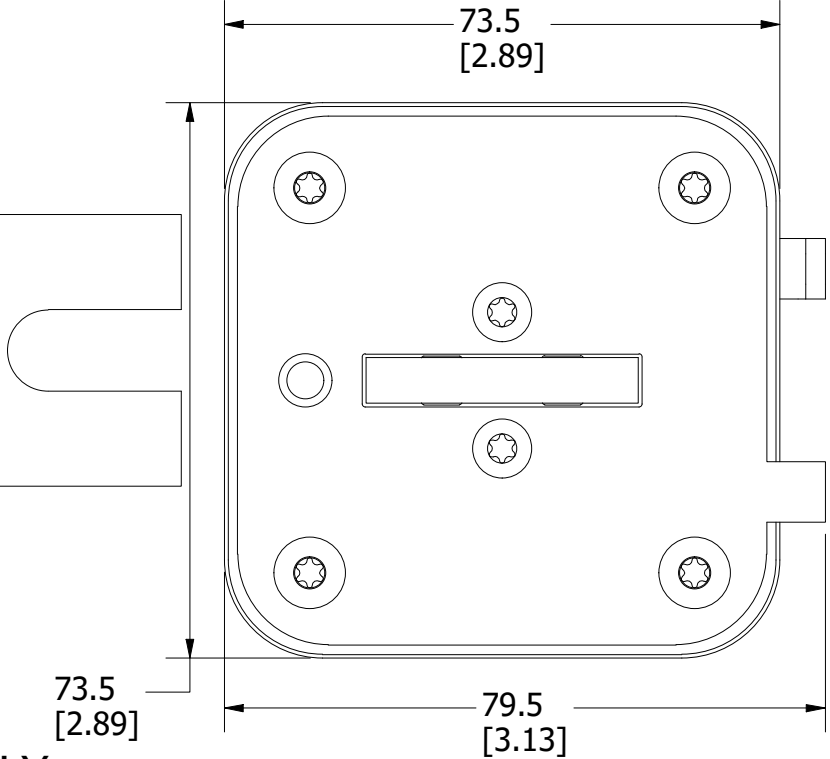
FUSE WITH MICROSWITCH



INTERNAL INDICATOR



FOR REFERENCE ONLY



<S>		CRITICAL CHARACTERISTIC FOR PART SAFETY/COMPLIANCE	
●		DENOTES CRITICAL CHARACTERISTICS.	
CPK		DENOTES CPK DIMENSIONS, -MINIMUM CPK VALUE	
ST		DENOTES A CHARACTERISTIC THAT PROVIDES AN INDICATION OF PROCESS PERFORMANCE. PROCEDURE FOR MEASUREMENT AND TRACKING TO BE DEFINED IN LITTELFUSE INSPECTION INSTRUCTIONS.	
CP		DENOTES CP DIMENSIONS, -MINIMUM CP VALUE MUST BE WITHIN THE DIMENSIONAL LIMITATIONS SHOWN ON DRAWING AND INITIALLY LOCATED TO ALLOW FOR MAXIMUM TOOL LIFE.	
C			
MATL SPEC		FINISH	
DRW myork	DATE 3/9/2020	SCALE NTS	FINISH GOOD WT GRAMS/PIECE
UNLESS OTHERWISE SPECIFIED, DIMENSIONS ARE IN MILLIMETERS, DIMENSIONS IN BRACKETS [] ARE INCHES DIMENSIONING AND DO NOT INCLUDE PLATING. TOLERANCING TO BE INTERPRETED IN ACCORDANCE WITH ANSI Y14.5M-1994			
3RD ANGLE PROJECTION			
TITLE		PSX SIZE 3XL DIN (DB) FUSE OUTLINE	
Littelfuse® CHICAGO, ILLINOIS 60631		REVISION C	DRWG NO. OL-PSX3XLDB0000
		SHEET 1 OF 1	