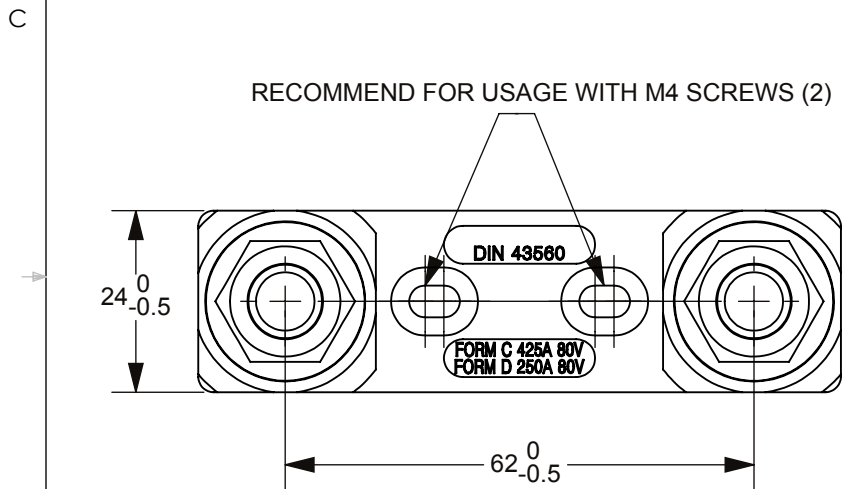
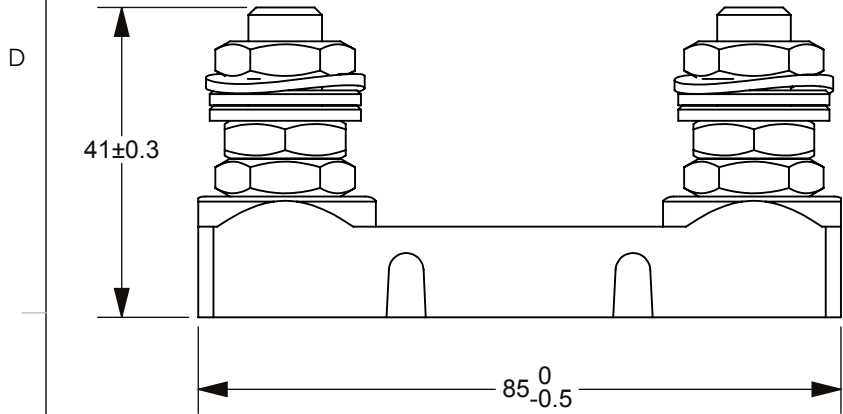
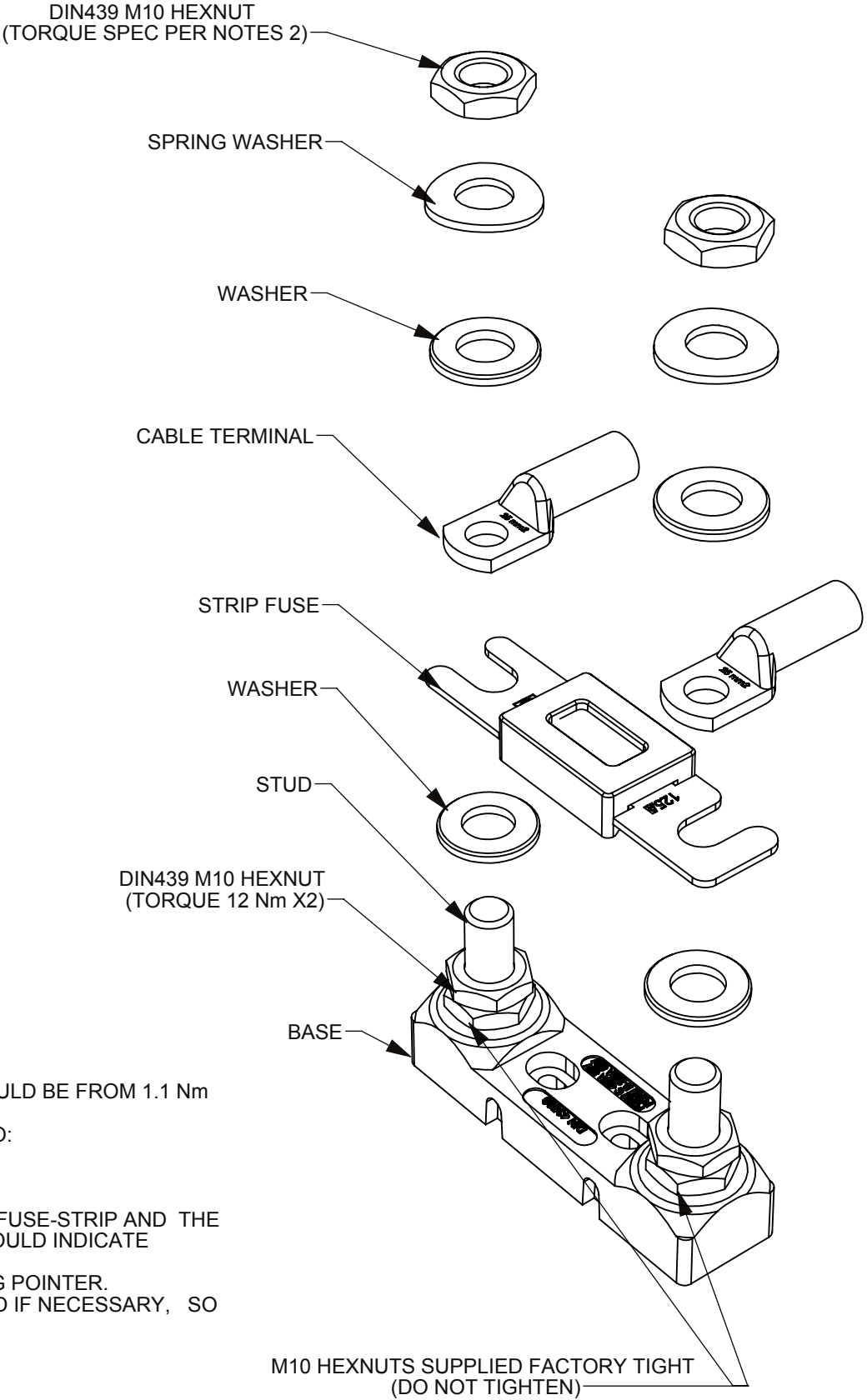





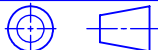
THIS DRAWING AND THE INFORMATION CONTAINED WITHIN IT ARE CONFIDENTIAL AND MAY NOT BE COPIED OR DISCLOSED WITHOUT THE WRITTEN PERMISSION OF LITTELFUSE.

REVISIONS				
ZONE	REV.	DESCRIPTION	DATE	APPROVED
	A	516426GCC-NEW RELEASE	F YUE	27/SEPT/2016
	B	ECO 518625 UPDATE TORQUE SPEC & NOTES & ASSEMBLY, REDRAW IN SOLIDWORKS	A HOANG	6/DEC/2017
				J THOMAS



- NOTES:
- THE M4 SCREWS WHEN ASSEMBLING THE FUSE HOLDER TO VEHICLES SHOULD BE FROM 1.1 Nm TO 5 Nm (MAXIMUM) PER ISO 898, PER BOLT STRENGTH MARKINGS.
  - THE MAXIMUM TORQUE OF THE FUSE-STRIP ON FUSE-HOLDER AMOUNTS TO:  
35 A UP TO 63A: MAXIMUM 5Nm  
80A UP TO 100A: MAXIMUM 8Nm  
FROM 125A: MAXIMUM 10Nm
  - THESE TORQUES APPLY ONLY UNDER THE PREREQUISITE THAT BOTH THR FUSE-STRIP AND THE CABLE TERMINALS ARE SECURED AGAINST ROTATION. THE FUSE-STRIP SHOULD INDICATE AFTERWARDS NO VISIBLE DEFORMATIONS.
  - THE INDICATED VALUES WERE TAKEN WITH A TORQUE KEY WITH DRAGGING POINTER.
  - WHEN USING OTHER ASSEMBLY METHODS, THE TORQUE IS TO BE REDUCED IF NECESSARY, SO THAT NOT TO DEFORM THE FUSE-STRIP.
  - FOR ASSEMBLY DETAIL REFER TO INSTALLATION INSTRUCTION BULLETIN.



NO.	COMPONENT NO.	COMPONENT NAME	QTY/M	U/M
INTERPRET DRAWING TO ANSI/ASME Y14.5-1994.				
	FIT/ FUNCTION CRITICAL CHARACTERISTICS SYMBOL			
<S>	SAFETY/ COMPLIANCE CRITICAL CHARACTERISTICS SYMBOL			
CPK	DENOTES CPK DIMENSIONS MINIMUM CPK VALUE			
	DENOTES A CHARACTERISTIC THAT PROVIDES AN INDICATION OF PROCESS PERFORMANCE.PROCEDURE FOR MEASUREMENTAND TRACKINGTO BE DEFINED IN LITTELFUSE INSPECTION INSTRUCTIONS			
CP	DENOTES CP DIMENSIONS, -MINIMUM CP VALUE MUST BE WITHIN THE DIMENSIONAL LIMITATIONS SHOWN ON DRAWING AND INITIALLY LOCATED TO ALLOW FOR MAXIMUM TOOL LIFE			
DIMENSION MM, TOLERANCES UNLESS OTHERWISE SPECIFIED ONE PLACE DECIMAL ± 0.5      THREE PLACES DECIMAL ± 0.100 TWO PLACES DECIMAL ± 0.20      ANGULAR ± 2°				
	NAME	DATE	 <b>Littelfuse®</b> Expertise Applied   Answers Delivered	
DRAWN	A HOANG	6 DEC 2017		
CHECKED	A HOANG	6 DEC 2017		
	-	-		
	-	-		
	-	-	TITLE HOLDER FOR STRIP FUSE	
	-	-		
THIRD ANGLE PROJECTION			SIZE B	
				
DO NOT SCALE DRAWING			DWG. NO. OL 177.5731.0001	
SCALE 1:1			REV. B	
			SHEET 1 OF 1	