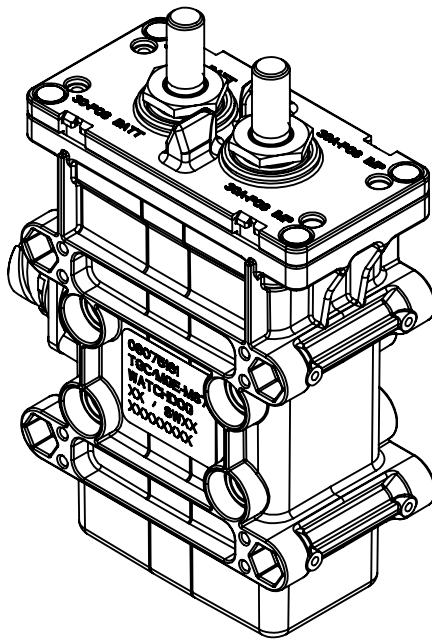
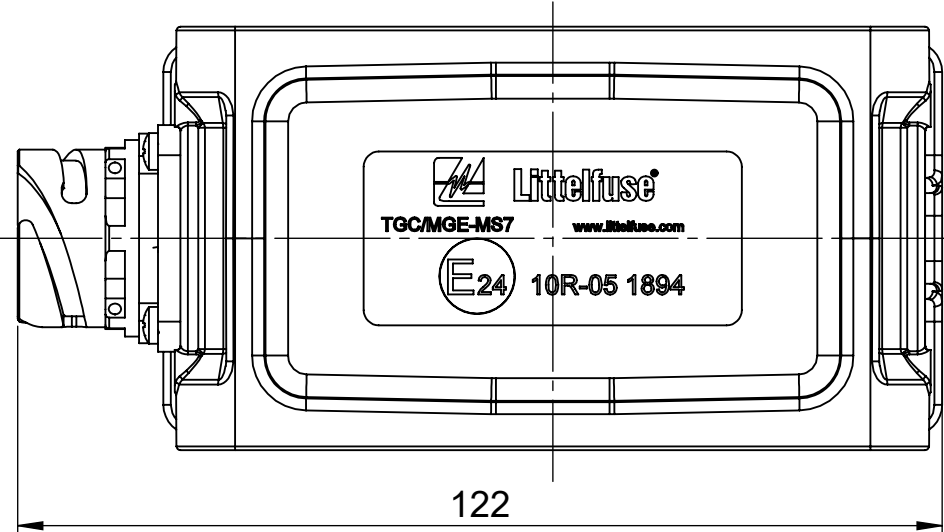
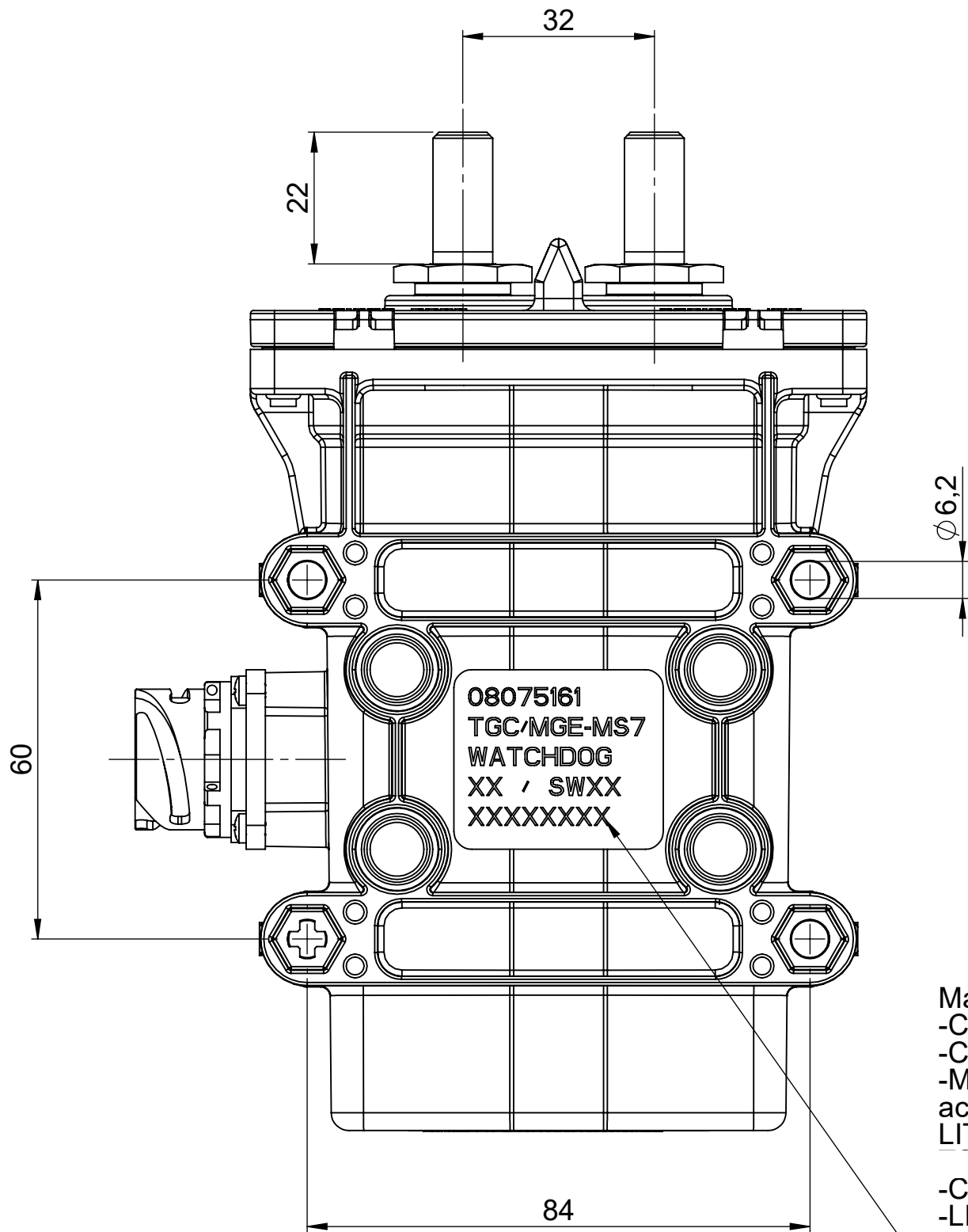


REV.		DESCRIPTION	DATE	DESIGNED	APPROVED
A		FIRST ISSUE OF OUTLINE DRAWING	15-June-20	Gasparini	Tinto



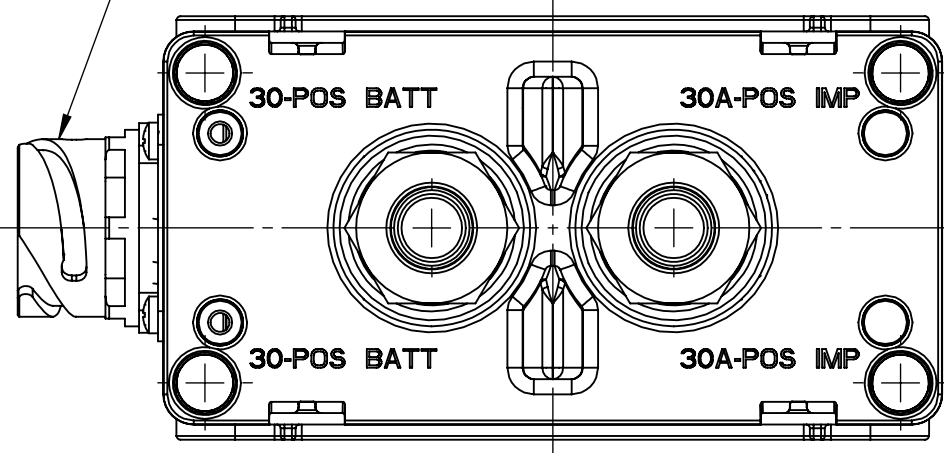
Scale 1:2



Markinh showing:
-Code IVECO
-Code LITTELFUSE
-Manufacturing date according to LITTELFUSE standard

-Code IVECO
-LITTELFUSE production progressive code

Connector DIN 72585-A1-7 ways



PRESCRIPTIONS:


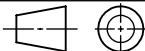
- Torque of screw M10= 19Nm max
- Fix the device with M6 screws and with torque of 6 ± 2 Nm
- Nuts and bolts supplied on the kit LITTELFUSE code 10844041

CHARACTERISTICS:

- Nominal working tension: 11 - 28.5 V
- Nominal working current: 10A
- Nominal working current main contacts: 500 A (1h at 23°C)
- Nominal max current main contact: 2000A for 5 sec
- External emergency switch - LITTELFUSE code 00227000

SAP drawing number:

Material and treatments:

DIMENSIONS AND TOLERANCES IN MILLIMETERS, DEFINED ACCORDING TO ISO 1101-2017.																		
linear dimensions																		
0,5 3	>3 6	>6 30	>30 120	>120 400	>400 1000	>1000 2000												
±0,2	±0,3	±0,5	±0,8	±1,2	±2	±3												
angle (for range of lengths)																		
up to 10	>10 50	>50 120	>120 400	>400 1000	>1000 2000	>2000 4000												
±1°30'	±1°	±0°30'	±0°15'	±0°15'	±0°15'	±0°15'												
●	FIT/ FUNCTION CRITICAL CHARACTERISTICS SYMBOL																	
<S>	SAFETY/ COMPLIANCE CRITICAL CHARACTERISTICS SYMBOL																	
CPK	DENOTES CPK DIMENSIONS MINIMUM CPK VALUE																	
ST	DENOTES A CHARACTERISTIC THAT PROVIDES AN INDICATION OF PROCESS PERFORMANCE. PROCEDURE FOR MEASUREMENT AND TRACKING TO BE DEFINED IN LITTELFUSE INSPECTION INSTRUCTIONS																	
CP	DENOTES CP DIMENSIONS. -MINIMUM CP VALUE MUST BE WITHIN THE DIMENSIONAL LIMITATIONS SHOWN ON DRAWING AND INITIALLY LOCATED TO ALLOW FOR MAXIMUM TOOL LIFE																	
<table><tr><th>NAME</th><th>DATE</th></tr><tr><td>L. Dal Molin</td><td>07/05/2019</td></tr><tr><td>CHECKED</td><td>-</td></tr><tr><td></td><td>-</td></tr><tr><td></td><td>-</td></tr><tr><td></td><td>-</td></tr></table>			NAME	DATE	L. Dal Molin	07/05/2019	CHECKED	-		-		-		-	<div> Littelfuse®</div> <div>Expertise Applied Answers Delivered</div>			
NAME	DATE																	
L. Dal Molin	07/05/2019																	
CHECKED	-																	
	-																	
	-																	
	-																	
FORM NO.: CVP-PE40-0013 REV A			TITLE Electrical BDS															
FIRST ANGLE PROJECTION																		
			SIZE: A2 DWG. NO. OL-08075161 OUTLINE REV. A															
DO NOT SCALE DRAWING			SCALE 1:1 SHEET 1 OF 1															