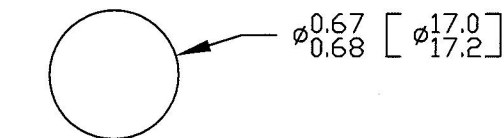


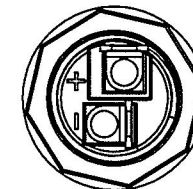
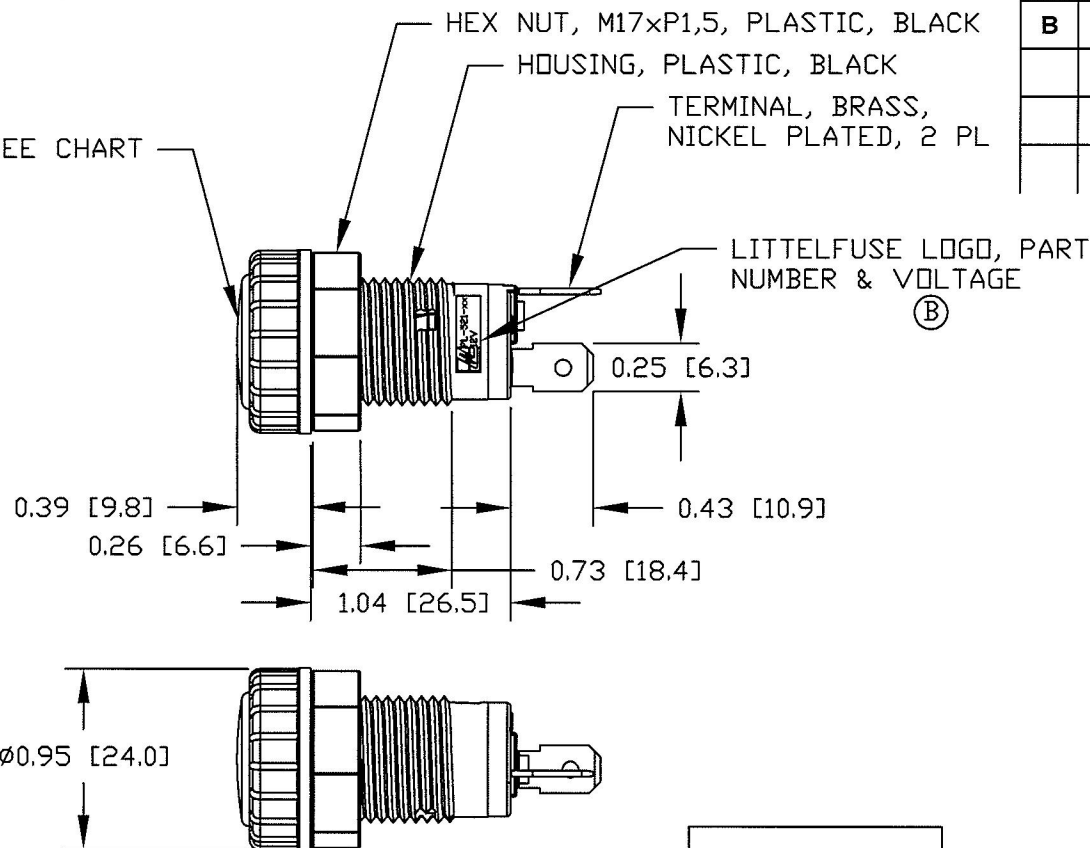
Revision Control Record

Rev.	Description of Change	ECN No.	Date
A	RELEASED DRAWING	11390	10/28/11
B	ADDED LABEL	12060	2/15/12

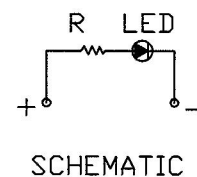


Mounting Hole

LENS & LED, SEE CHART



PL-521-RC	RED
PL-521-GC	GREEN
PL-521-AC	AMBER
PT NO	LENS & LED COLOR



- NOTES:
1. POLARITY SENSITIVE
 2. RATING: 12Vdc
 3. ILLUMINATION: 500 LUX

Tolerances Unless otherwise specifically noted, the following are default tolerances;

2-places $\pm 0.02"$ **3-places** $\pm 0.005"$ **Angular** $\pm 1^\circ$

Metric: Shown in [] refers to equivalent English Dim Tol

"REF." or an Asterisk (*) = Non-Toleranced Reference Dimension, shown for clarification purposes only.

NOTE: All tolerances are Non-Cumulative.

PROPRIETARY INFORMATION

This Engineering Drawing, and the information contained herein, is proprietary to Cole Hersee Company and may not be disclosed, re-produced, or in any other way transferred or communicated to any other party without the express written consent of an authorized representative of Cole Hersee Company.

Special Characteristics:

- ☒ **CC** Critical Characteristic, relating to Safety and/or Regulatory Compliance
- ☒ **X** Significant Characteristic relating to Process Control
- ☒ **KC** Control Dimension relating to Form - Fit - Function as defined by Cole Hersee Company and/or the Customer



Cole Hersee Co.

20 Old Colony Ave., South Boston, MA, 02127
Phn: 617-268-2100 Web: www.colehersee.com

Description:

PILOT LIGHT

Drawing / Part No.:

PL-521

Current Rev.

B

FORM CHT-6 (2/07)

Used On:
or Ref.: **EX28910**

Scale: 1:1

Drawn BY: ABC

Date Drawn: 9/27/11

Pg. 1 of 1