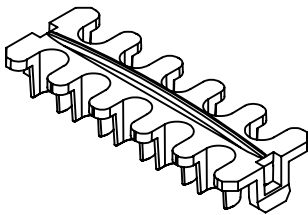
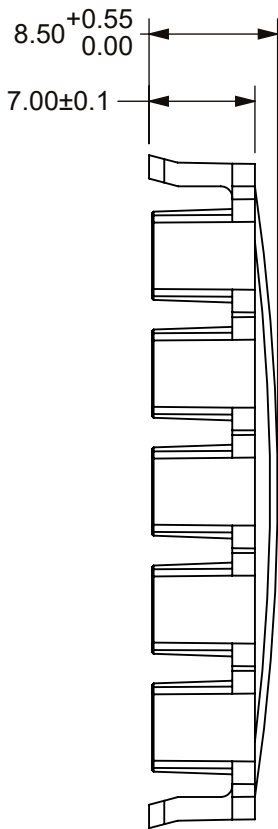
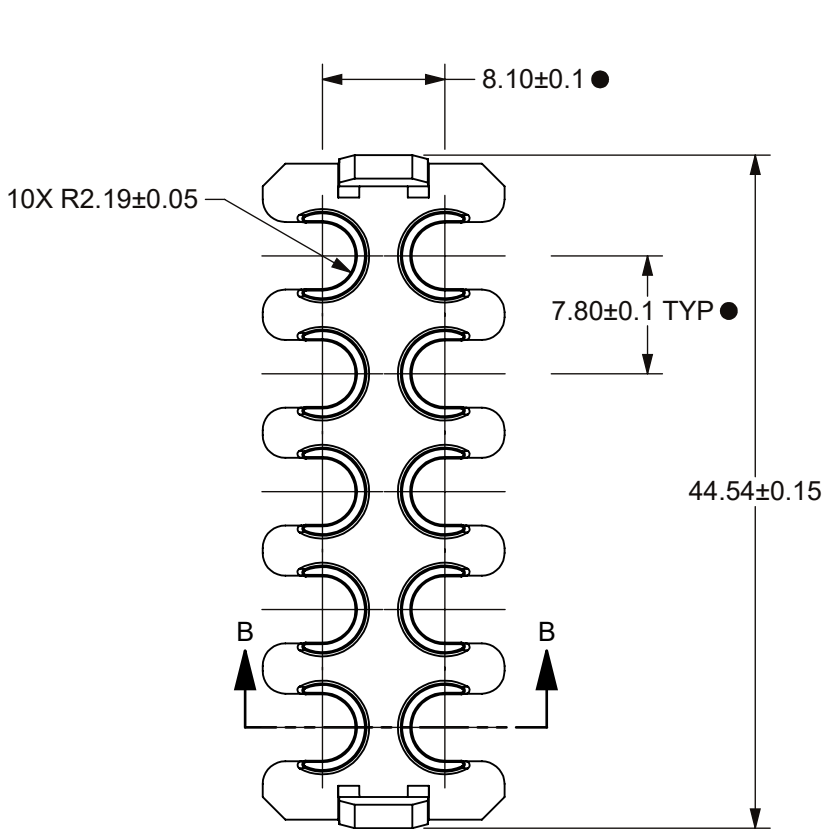
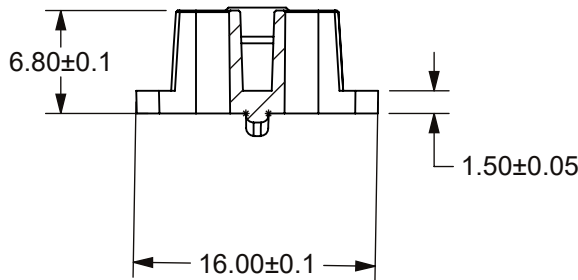


THIS DRAWING AND THE INFORMATION CONTAINED WITHIN IT ARE CONFIDENTIAL AND MAY NOT BE COPIED OR DISCLOSED WITHOUT THE WRITTEN PERMISSION OF LITTELFUSE.

REVISIONS				
ZONE	REV.	DESCRIPTION	DATE	APPROVED
	A	PCO#5300103. INITIAL RELEASE. DSILVA.	10/4/2022	L.ARGIL




SCALE 1:1



SECTION B-B

- NOTES:
- THE 3D MODEL OF THIS PART IS TO BE USED AS A REFERENCE ONLY.
 - MATERIAL: NYLON POLYAMIDE, COLOR BLUE.

NO.	COMPONENT NO.	DESCRIPTION	QTY/M	U/M
BILL OF MATERIAL				
TOLERANCES UNLESS OTHERWISE SPECIFIED (REF.ISO2768-M) FOR METAL, REF SPI PLASTICS				
.5 to 3	>3 to 6	>6 to 30	>30 to 120	>120 to 400
±0.10	±0.10	±0.20	±0.30	±0.50
				ANGLE
				±0.5°
DIMENSIONS ARE SHOWN IN MILLIMETERS. DIMENSIONS AND TOLERANCES ARE DEFINED ACCORDING TO ANSI/ASME Y14.5-1994.				
PER CHL-NPD20-0008 PROCEDURE	●	FIT/ FUNCTION CRITICAL CHARACTERISTICS		
	<S>	SAFETY/ COMPLIANCE CRITICAL CHARACTERISTICS SYMBOL		
	CPK	DENOTES CPK DIMENSIONS MINIMUM CPK VALUE		
	ST	DENOTES A CHARACTERISTIC THAT PROVIDES AN INDICATION OF PROCESS PERFORMANCE.PROCEDURE FOR MEASUREMENTAND TRACKINGTO BE DEFINED IN LITTELFUSE INSPECTION INSTRUCTIONS		
CP	DENOTES CP DIMENSIONS. -MINIMUM CP VALUE MUST BE WITHIN THE DIMENSIONAL LIMITATIONS SHOWN ON DRAWING AND INITIALLY LOCATED TO ALLOW FOR MAXIMUM TOOL LIFE			
	NAME	DATE	<div>Expertise Applied Answers Delivered</div> <div>TITLE</div> <div>TPA</div>	
DRAWN	DSILVA	7/19/2022		
CHECKED	-	-		
	-	-		
FORM NO: CVP-PE40-0003 REV B				
THIRD ANGLE PROJECTION				
			SIZE	DWG. NO.
			B	OUTLINE
DO NOT SCALE DRAWING			SCALE 2:1	
			SHEET 1 OF 1	



Expertise Applied |Answers Delivered

TITLE

TPA

SIZE

B

DWG. NO.

OUTLINE

OL-883-083

REV.

A

SHEET 1 OF 1