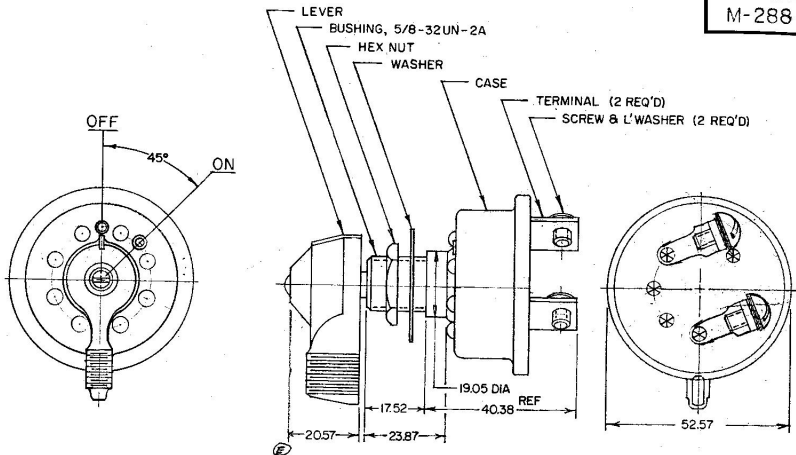


EX-14147

M-288



Confidential property of Cole Hersee

NOTE:-

1. ALL STEEL PARTS PLATED
2. O-RING SEALED AT BUSHING
3. SILVER CONTACT SURFACES
4. 50 AMP RATING AT 14 VOLTS

METRIC

													DO NOT SCALE	
LET.	WAS	DATE	BY	LET	WAS	DATE	BY	MATERIAL	DRAWN	CHECKED	APPROV'D	SCALE		DATE DRAWN
								#	M.F.	<input checked="" type="checkbox"/>		1/2"		10-21-65
								FINISH						DATE BLUEPRINT
					E ECN 01089	7-6-61			Ch. Cole Hersee Co. <small>P.O. BOX 1000 BOSTON, MASS. 02111</small>					
					D ECN 01091	1-17-61		TOLERANCES DECIMAL ±	"OFF-ON" DISCONNECT SWITCH					M-288
					C REDRAWN	1-17-61								