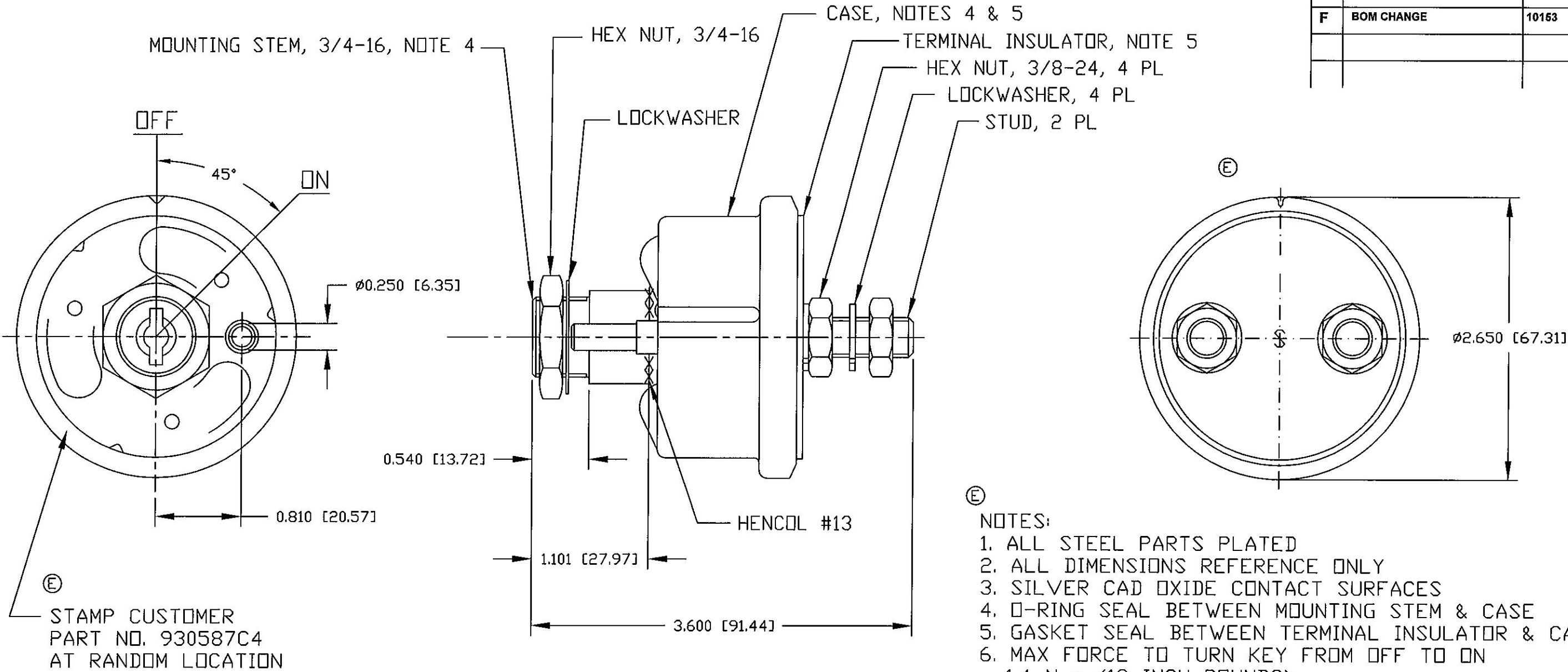


Revision Control Record			
Rev.	Description of Change	ECN No.	Date
D	SPELLING CORRECTION	02119	3/19/02
E	NOTES	03016	1/16/03
F	BOM CHANGE	10153	4/29/10



- NOTES:
1. ALL STEEL PARTS PLATED
  2. ALL DIMENSIONS REFERENCE ONLY
  3. SILVER CAD OXIDE CONTACT SURFACES
  4. O-RING SEAL BETWEEN MOUNTING STEM & CASE
  5. GASKET SEAL BETWEEN TERMINAL INSULATOR & CASE
  6. MAX FORCE TO TURN KEY FROM OFF TO ON  
1.4 N-m (12 INCH-POUNDS)
  7. RATING:  
SWITCH MUST CARRY 1000 AMPS @ 6-36 VDC  
FOR 1000 CYCLES OF 15 SECONDS ON, 5 MINUTES  
OFF WITHOUT SIGNIFICANT DETERIORATION OF  
CONTACTS

<p><b>Tolerances</b> Unless otherwise specifically noted, the following are default tolerances:</p> <ul style="list-style-type: none"> <li>* 2-place Decimal Dimensions <math>\pm 0.02</math>"</li> <li>* 3-place Decimal Dimensions <math>\pm 0.005</math>"</li> <li>* Angular Dimensions <math>\pm 1.0</math> Deg.</li> <li>* Metric: Refer to equivalent English Dimension Tolerance</li> </ul> <p>&gt;&gt;&gt; NOTE: All tolerances are Non-Cumulative. &lt;&lt;&lt;</p> <p><b>Dimensional Units</b> All dimensions are expressed in inches except those shown in brackets (xxx) are expressed in millimeters</p> <p>"REF." or an Asterisk (*) = Non-Toleranced Reference Dimension, shown for clarification purposes only.</p>	
Used On or Ref.:	EX20608
Scale:	1:1

<p><b>PROPRIETARY INFORMATION</b> This Engineering Drawing, and the information contained herein, is proprietary to Cole Hersee Company and may not be disclosed, re-produced, or in any other way transferred or communicated to any other party without the express written consent of an authorized representative of Cole Hersee Company.</p> <p><b>DESIGN CONTROL</b> It is the responsibility of the individual using/ referencing this drawing to assure that the noted design revision level agrees with the revision level of the Controlled Document (Master Drawing). This is a NON-CONTROLLED DOCUMENT unless otherwise specifically noted.</p> <p>DO NOT SCALE - Dimensional variation may occur during printing/ reproduction.</p>	
Drawn By:	VAK
Date Drawn:	2/21/86

<p><b>Special Characteristics:</b></p> <ul style="list-style-type: none"> <li><input checked="" type="checkbox"/> Critical Characteristic, relating to Safety and/or Regulatory Compliance</li> <li><input checked="" type="checkbox"/> Significant Characteristic relating to Process Control (SPC)</li> <li><input checked="" type="checkbox"/> Control Dimension relating to Form - Fit - Function as defined by Cole Hersee Company and/or the Customer</li> </ul> <p>(Note that the identification of any Characteristics as being "Special" does not alter the requirement that ALL specified dimensions &amp; tolerances must be met.)</p>	
Responsible Engineer:	
Pg. 1 of 1	

<p><b>Cole Hersee Co.</b> 20 Old Colony Ave., South Boston, MA, 02127 Phn: 617-268-2100 Web: www.colehersee.com</p>	
<p><b>Description:</b> SWITCH, MASTER DISCONNECT</p>	
<p>Drawing / Part No.:</p> <p>2484-43</p>	<p>Current Rev.</p> <p>F</p>