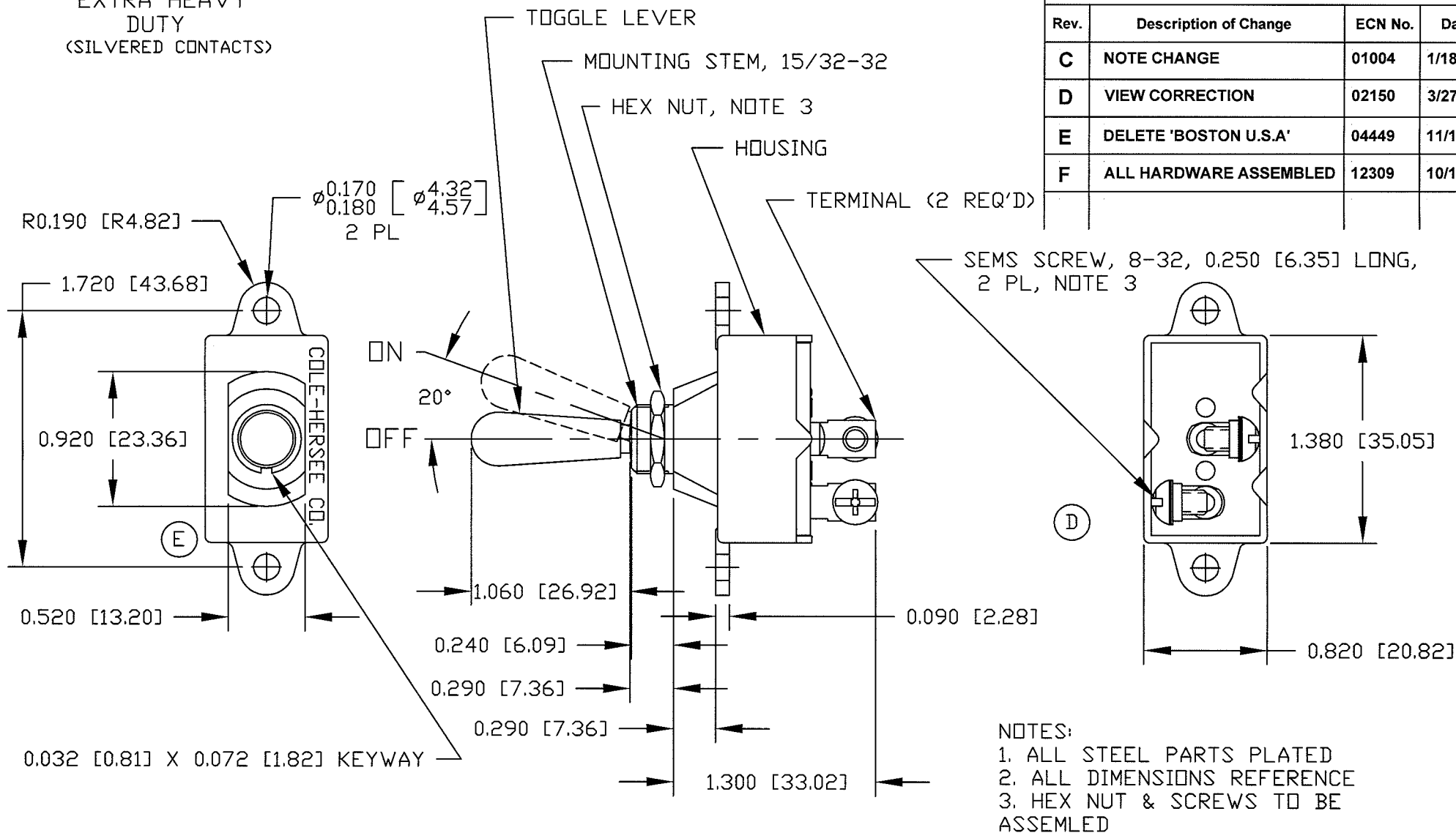


EXTRA HEAVY  
DUTY  
(SILVERED CONTACTS)



- NOTES:
1. ALL STEEL PARTS PLATED
  2. ALL DIMENSIONS REFERENCE
  3. HEX NUT & SCREWS TO BE ASSEMBLED

# Revision Control Record

Rev.	Description of Change	ECN No.	Date
C	NOTE CHANGE	01004	1/18/01
D	VIEW CORRECTION	02150	3/27/02
E	DELETE 'BOSTON U.S.A'	04449	11/10/04
F	ALL HARDWARE ASSEMBLED	12309	10/18/12

**Tolerances** Unless otherwise specifically noted, the following are default tolerances;  
 \* 2-place Decimal Dimensions  $\pm 0.02$ "  
 \* 3-place Decimal Dimensions  $\pm 0.005$ "  
 \* Angular Dimensions  $\pm 1.0$  Deg.  
 \* Metric: Refer to equivalent English Dimension Tolerance  
 >>> NOTE: All tolerances are Non-Cumulative. <<<

**Dimensional Units** All dimensions are expressed in inches except those shown in brackets (xxx) are expressed in millimeters

"REF." or an Asterisk (\*) = Non-Toleranced Reference Dimension, shown for clarification purposes only.

**PROPRIETARY INFORMATION** This Engineering Drawing, and the information contained herein, is proprietary to Cole Hersee Company and may not be disclosed, re-produced, or in any other way transferred or communicated to any other party without the express written consent of an authorized representative of Cole Hersee Company.

**DESIGN CONTROL** It is the responsibility of the individual using / referencing this drawing to assure that the noted design revision level agrees with the revision level of the Controlled Document (Master Drawing). This is a NON-CONTROLLED DOCUMENT unless otherwise specifically noted.

**DO NOT SCALE** - Dimensional variation may occur during printing / reproduction.

## Key for Special Characteristics:



Critical Characteristic, relating to Safety and/or Regulatory Compliance



Significant Characteristic relating to Process Control (SPC)



Control Dimension relating to Form - Fit - Function as defined by Cole Hersee Company and/or the Customer

(Note that the identification of any Characteristics as being "Special" does not alter the requirement that ALL specified dimensions & tolerances must be met.)



**Cole Hersee Co.**

20 Old Colony Ave., South Boston, MA, 02127  
Phn: 617-268-2100 Web: [www.colehersee.com](http://www.colehersee.com)

**Description:** SP-ST TOGGLE SWITCH

**Drawing / Part No.:**

**551840**

**Current Rev.**

**F**

Used On  
or Ref.:

Scale: **1:1**

Drawn **PEM**  
By:

Date **9/18/00**  
Drawn:

Responsible **DPS**  
Engineer:

**Pg. 1 of 1**