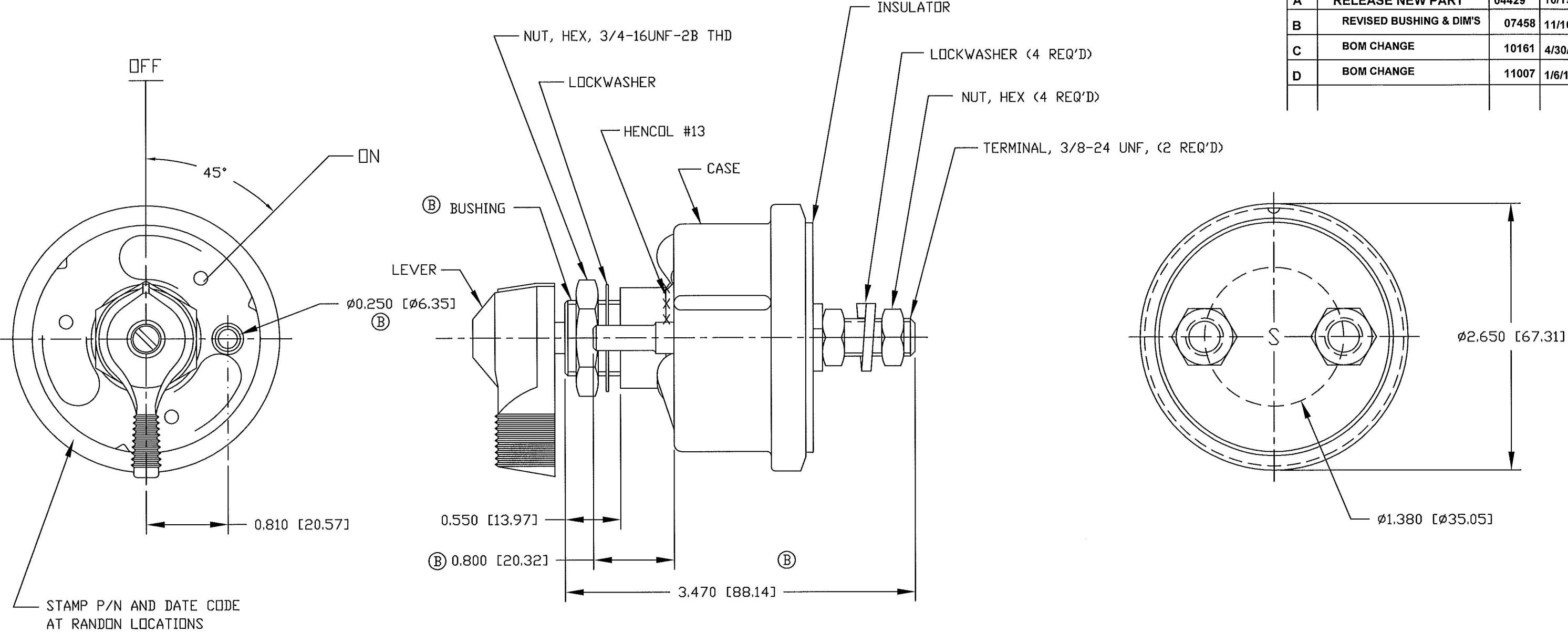


Revision Control Record			
Rev.	Description of Change	ECN No.	Date
A	RELEASE NEW PART	04429	10/19/04
B	REVISED BUSHING & DIM'S	07458	11/16/07
C	BOM CHANGE	10161	4/30/10
D	BOM CHANGE	11007	1/6/11




- NOTES:
1. ALL STEEL PARTS PLATED
  2. SILVER CONTACT SURFACES
  3. O-RING SEALED AT MTG STEM
  4. GASKET SEAL AT TERMINAL INSULATOR
  5. ALL DIMENSIONS REFERENCE

RATING:  
SWITCH MUST CARRY 1000 AMPS  
@ 6, 12 & 24 VDC FOR 1000 CYCLES  
OF 30 SEC ON, 5 MIN OFF WITHOUT  
SIGNIFICANT DETERIORATION  
OF CONTACTS

<b>Tolerances</b> Unless otherwise specifically noted, the following are default tolerances; * 2-place Decimal Dimensions +/- .02" * 3-place Decimal Dimensions +/- .005" * Angular Dimensions +/- 1.0 Deg. * Metric: Refer to equivalent English Dimension Tolerance >>> NOTE: All tolerances are Non-Cumulative. <<<  <b>Dimensional Units</b> All dimensions are expressed in inches except those shown in brackets (xxx) are expressed in millimeters  "REF." or an Asterisk (*) = Non-Toleranced Reference Dimension, shown for clarification purposes only.	
Ref.: EX28110	Scale: 1:1

<b>PROPRIETARY INFORMATION</b> This Engineering Drawing, and the information contained herein, is proprietary to Cole Hersee Company and may not be disclosed, re-produced, or in any other way transferred or communicated to any other party without the express written consent of an authorized representative of Cole Hersee Company.  <b>DESIGN CONTROL</b> It is the responsibility of the individual using / referencing this drawing to assure that the noted design revision level agrees with the revision level of the Controlled Document (Master Drawing). This is a NON-CONTROLLED DOCUMENT unless otherwise specifically noted.  DO NOT SCALE - Dimensional variation may occur during printing / reproduction.	
Drawn By: DE	Date Drawn: 9/9/04

<b>Key for Special Characteristics:</b>  CC Critical Characteristic, relating to Safety and/or Regulatory Compliance  X Significant Characteristic relating to Process Control (SPC)  CD Control Dimension relating to Form - Fit - Function as defined by Cole Hersee Company and/or the Customer  (Note that the identification of any Characteristics as being "Special" does not alter the requirement that ALL specified dimensions & tolerances must be met.)	
Responsible Engineer:	Pg. 1 of 1



**Cole Hersee Co.**  
20 Old Colony Ave., South Boston, MA, 02127  
Phn: 617-268-2100 Web: www.colehersee.com

**Description:** SW, MASTER DISCONNECT

**Drawing / Part No.:** 24025-04

**Current Rev.:** D