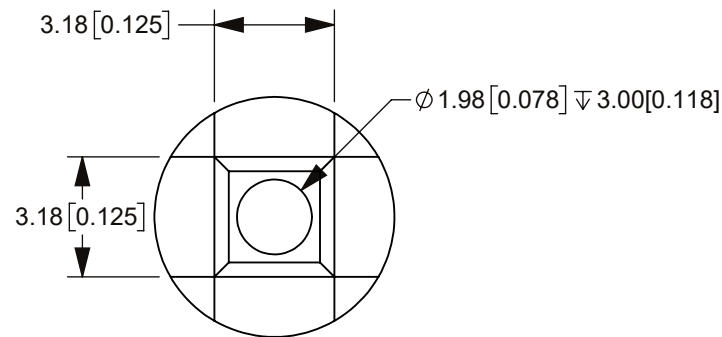
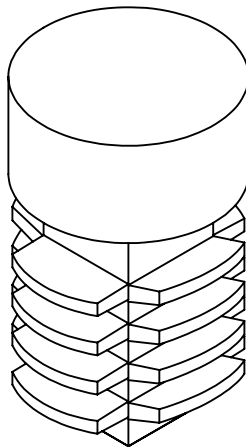
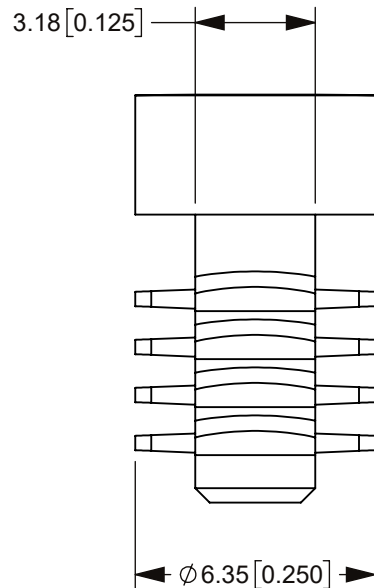
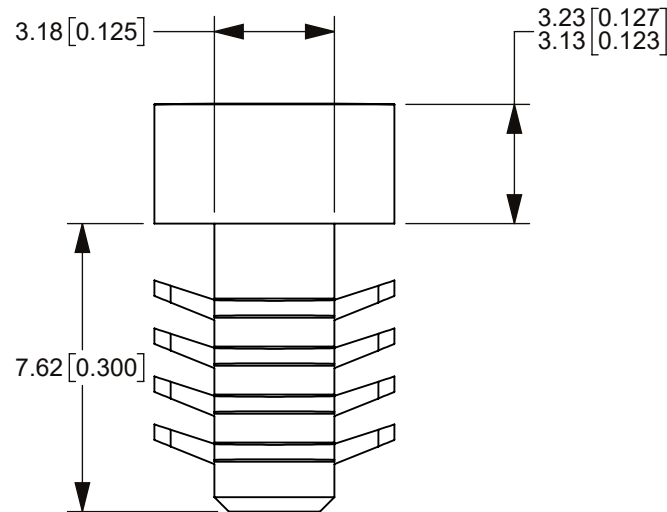
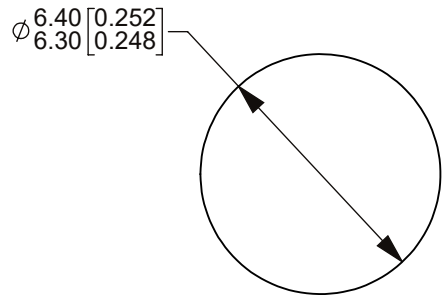


THIS DRAWING AND THE INFORMATION CONTAINED WITHIN IT ARE CONFIDENTIAL AND MAY NOT BE COPIED OR DISCLOSED WITHOUT THE WRITTEN PERMISSION OF LITTELFUSE.

PART NUMBER	COLOR
80456	RED
80456-1	YELLOW
80456-2	BLACK

REVISIONS				
ZONE	REV.	DESCRIPTION	DATE	APPROVED
	A	PCO #5300102. INITIAL RELEASE. DSILVA	10/3/2022	L.ARGIL



NOTES:



1. MATERIAL PVC, SEE CHART FOR COLOR.
2. DRAFT 0"-30' PER SIDE UNLESS NOTED OTHERWISE.
3. DIMENSIONS IN INCHES ARE SHOWN IN [ ] (REFERS TO EQUIVALENT METRIC DIMENSION TOLERANCE).
4. ALL TOLERANCES ARE NON-CUMULATIVE.
5. DIMENSIONS IN INCHES ARE MANDATORY.



NO.	COMPONENT NO.	COMPONENT NAME	QTY	U
-----	---------------	----------------	-----	---

TOLERANCES UNLESS OTHERWISE SPECIFICALLY NOTED, THE FOLLOWING ARE THE DEFAULT TOLERANCES (INCHES).

TWO PLACES $\pm 0.02''$	THREE PLACES $\pm 0.005''$	ANGULAR $\pm 1^\circ$
----------------------------	-------------------------------	--------------------------

DIMENSIONS ARE SHOWN IN MILLIMETERS. DIMENSIONS AND TOLERANCES ARE  
DEFINED ACCORDING TO ANSI/ASME Y14.5-1994.

PER CH1-NPD20-0008 PROCEDURE		FIT/ FUNCTION CRITICAL CHARACTERISTICS
	<S>	SAFETY/ COMPLIANCE CRITICAL CHARACTERISTICS SYMBOL
	CPK	DENOTES CPK DIMENSIONS MINIMUM CPK VALUE
		DENOTES A CHARACTERISTIC THAT PROVIDES AN INDICATION OF PROCESS PERFORMANCE, PROCEDURE FOR MEASUREMENT AND TRACKING TO BE DEFINED IN LITTELFUSE INSPECTION INSTRUCTIONS
	CP	DENOTES CP DIMENSIONS, -MINIMUM CP VALUE MUST BE WITHIN THE DIMENSIONAL LIMITATIONS SHOWN ON DRAWING AND INITIALLY LOCATED TO ALLOW FOR MAXIMUM TOOL LIFE

	NAME	DATE	<div><b>Littelfuse®</b></div> <div>Expertise Applied   Answers Delivered</div>			
DRAWN	DSILVA	7/26/2022				
CHECKED	-	-				
	-	-				
	-	-				
FORM NO: CVP-PE40-0003 REV B			TITLE			
THIRD ANGLE PROJECTION						
			PIN			
DO NOT SCALE DRAWING			SIZE B	DWG. NO. OUTLINE	OL-80456	REV. A
			SCALE 5:1			SHEET 1 OF 1